

River Inscription?

Author: Peter Nielsen
 Comment: See Vol 0 Slide Show in Appendices.
 Journal Reference: Paper 3 of Vol 0 of CD ebook ISBN 0-646-40916-6
 at www.nodrift.com since 21 Dec 04

My original explanation of how rivers are inscribed.
 Refer to 0.2 for Introduction and Method.

Fig 1 (below) shows Kamchatka SW rivers.

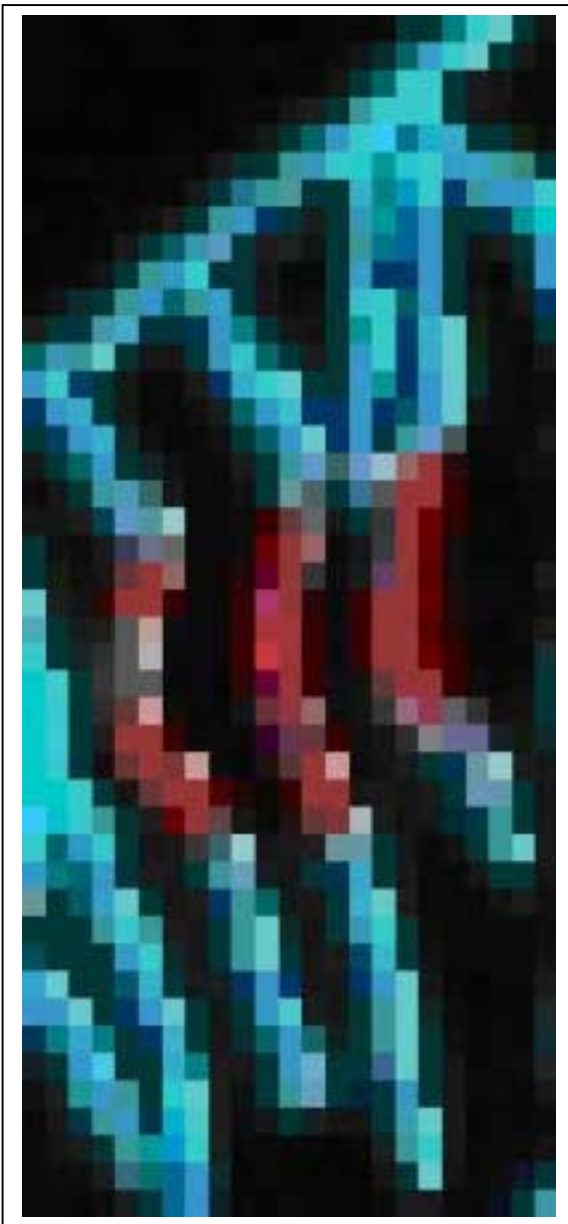


Fig 2 (left) shows a Kamchatka NW river.

Kamchatka exhibits a good set of coastal rivers along its W side, so I looked for, and found symmetries between its N, S coastal rivers and S, N coastal river potentials, Obs 38-9.

I found related symmetries in Obs 40-45, between N, S coastal river source tributaries and S, N coastal river source tributary potentials also, respectively, by cropping a few pixel columns from the left of the digital picture.

I had been inspired to do this by an inverse similarity of three adjacent rivers on the upper mid-left (Fig 1), the parallelism of their reddened bends, contradicting Drainage genesis.

Had all three of these "knees" been produced by the "elbow" potential that had evidently produced the left-most "knee", sitting at the mirror position on the right (Fig 2).

This was how my landform symmetry inscription genesis idea started.

Obs 276a-b shows one of the best demonstrations of the proto-idea in its capes, 0.1 Figs 1, 2.

Landform inscription explanation matures in 0.4 and Vol y), becomes rotational macros in y.01-6 and y.5098, y.5107.

The pre-rotational proto-idea climaxes here in Fig 3, after my finding macro-style continuations of river systems through neighbouring symmetries in:

Guatemala, E Coastal Greenland, Mekong, Nile and Red River Deltas, NE Congo (Obs 255-60) and Cape of Good Hope (Obs 211-34) Symmetries.

At this proto-idea stage, I was thinking of translational wandering fringe patterns.

y.01-6 Proof explains how "macro" effects may be produced by a radial wandering through concentric, multidirectional symmetries.

Fig 3: Orange Differences between Obs 251, 253, NE Congo Coincidences, produced by a 2 pixel column symmetry axis shift.

Orange lines represent new "relic" river segment coincidences with the shifted "potential".

RHS half Coincidence "relic" fields were cropped to the 195 X 636 pixel area they had in common, then Composite-d.

Coincident coincidence relics are black. The green pairs of lines 4 pixels apart are meaningless.

The appearance together of important characteristics in neighbouring symmetries, of this region at least, is telling.

Self-similar NEMIS and long lineal coincidences, many new linearities, corroborate this Vol 0's river inscription proto-idea:

The original inscriptions of sections of various rivers may be inscribed by a wandering, "waxing and waning" and so on, of interference patterns.

Various forms of wandering, and "waxing and waning" may produce distinctively different textures.

This NE Congo region may be unusual, because of its antipodality to the impact hemisphere . .

Such Freeze Effect-ed drainage patterns may be analysable to show global texture variations which may corroborate my impact hemisphere idea.

