

Globally Ubiquitous Antipodal Resonances. PTB Impact?

Abstract: Global merging (Compositing) of antipodal conjugacies is a way to recreate images of original inscriptional scenarios of rocky planets. Planetary Maps of Antipodal Resonances (MOACs) can be produced by Compositing Mercator Projections with antipodally conjugate inverted copies (antipodal grids superposed). Such a map of the Earth confirms my overall thesis via verification of earlier predictions, sub-ideas, suggests that this ebook's super huge impact (THESHI) may indeed have been the PTB Impactor.

Author: Peter Nielsen
 Comment: See w.1a-e Power-Point Presentation
 Journal Reference: Paper 2 of Vol x of CD ebook ISBN 0-646-40916-6
 at www.nodrift.com since 21 Dec 04

PREAMBLE

The spread of x.01's flare-subflare complexes around and beyond the Pacific Ocean, got me thinking that such precise antipodal resonances may be globally ubiquitous, consistent with 4.2's CMB waveguide, y.02's global macros, MACRO GENESIS explanation particularly its "~400 inscriptive [mantle] resonances, a 2-week super huge earthquake . . .".

According to y.02 theory, the Earth's faultlines have been largely inscribed as "rotational macros" of ~400 mantle "serm" symmetries during a 2-week period following this ebook's super huge impact (THESHI).

Global merging (Compositing) of antipodal conjugacies is thus indicated as a way to recreate a relic, planetary, original inscriptional scenario, consistent with:

1. Figs 1-4 Wrong Way-Right Way antipodal flares, subflares; flare head locations of impacts;
2. 3.4's earlier analysis of opposite continental, oceanic uplifts produced antipodal to, sub-horizontally ahead of oceanic, continental impactors and so on;
3. 3.1's idea that the oceanic continents started out where they are, a "Gondwanaland Archipelago";
4. Earlier work: 4.5-11 serm explanation, 1.01's Impact Hemispheric BOUNDARY (IHBO), Vol 1's IHBO-centred macro-symmetries, y.02's MACRO GENESIS idea:

"Multidirectional Serm Symmetries may generally have originated in 1-1 correspondences to the multiple resonances implied by serm fringe finesse, 4.8, FINESSE."

Superposition of antipodal conjugacies is simply achieved by superposing antipodal grids of a Mercator Projection.

PREDICTION

This method and explanation would be generally true of Mercator Projections of all rocky planets.

METHOD

I painted a coarse representational impression of a Mercator Projection of the Earth and Compositing it with an inverted antipodally conjugate copy.

For convenience, I did this in two halves: Africa-centred "Af" & Pacific-centred "Pac". I took Negatives of Af, Pac. Took Blue Brightness of Af to 0 to make its White lines Orange.

Took Pac Red Brightness to 0 to make its White lines Green, Hue to -90, Mirror Oriented it with 0 Rotation to produce the Africa-centred Afpac Composite.

I Mirror Oriented this with 0 Rotation, adjusted Hue to +125 to produce the Pacific-centred Pacaf Composite.

A telling pattern of coincidences is so produced, Figs 1-2 below. THESH1 Impact Tectonogenesis, locations of impacts are thus indicated, more Right Way locations of peripherally flared impacts and so on.

Biggest impacts tend to produce ocean deeps/basins, mountains, for example, Australian coastal deeps, river, mountain coincidences antipodal to North Atlantic deep impacts. An Indian Ocean deep antipodal to California's Sierra Nevada is another good, telling example.

Many impact centres, marked in the Figures as transparent yellow spots, are indicated by coincidences in the merged map of impact serm morphologies, star-shaped lakes, river junctions and so on, and antipodal islands, rises.

The Indian Ocean Kerguelen Rise antipodal to the huge California-Nevada, Utah-Canadian impactor is an complementary example consistent with 3.4's global ocean-continent antipodal conjugacy ideas.

Obviously, this work needs to be done with much greater refinement, using the full resolution of GEBCO and other digital data sets.

My intention has only been to show that the THESH1 Impact scenario can be worked out by combining indications of impact antipodal conjugacies, sub-horizontal effects, further physical inference and so on.

RESULTS

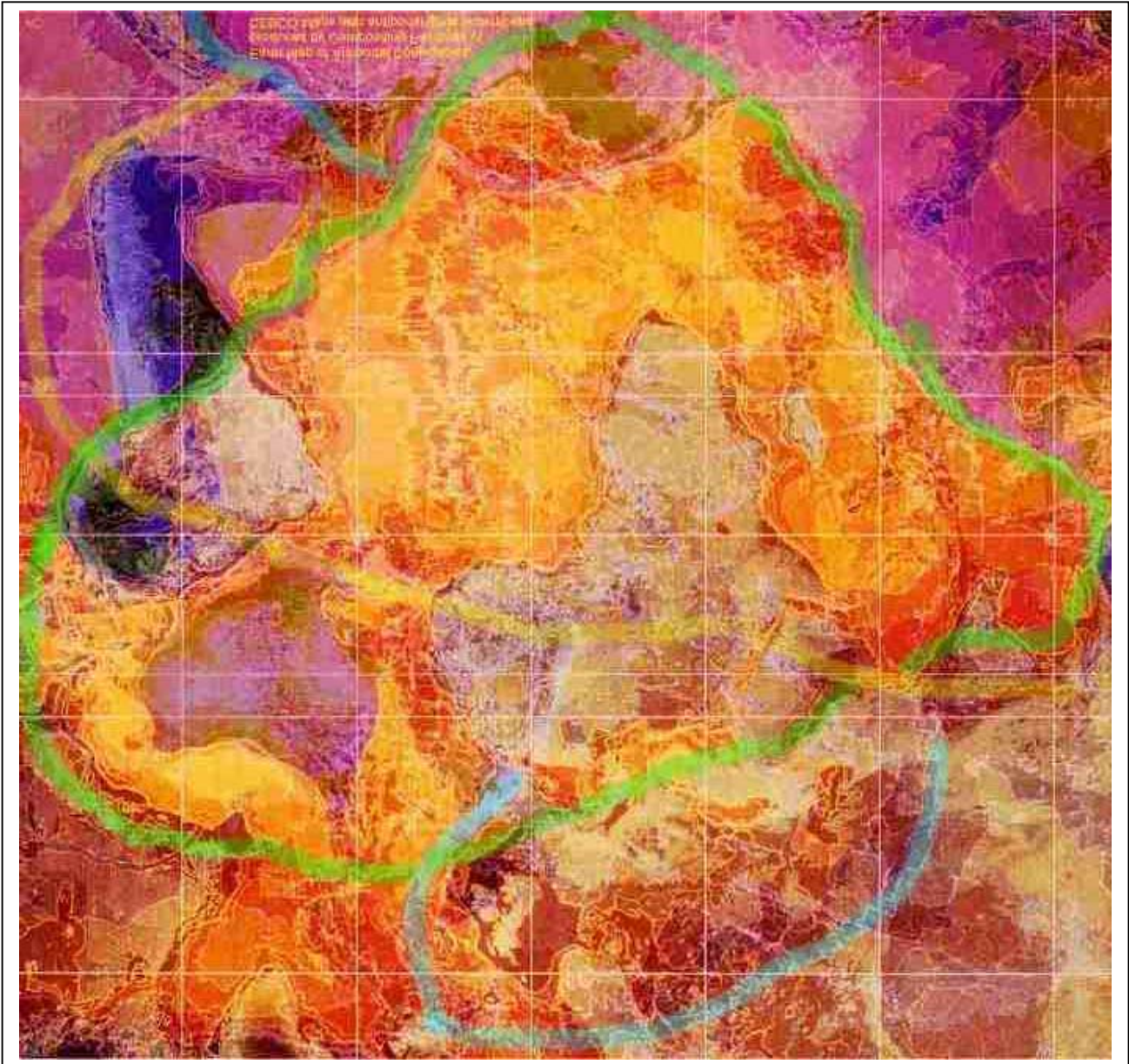
My predictions were thus tested, verified. An Earth Map produced by Compositing a Mercator Projection of the Earth with an antipodally conjugate inverted copy (with antipodal grids superposed) confirms this prediction:

1. IHBO where macro-symmetries had independently placed it.
2. Multiscale nested "Right Way" flares antipodal to multiscale nested "Wrong Way" flares covering much of the globe, consistent with sloping, limb-regional impacts at the heads of the "Right Way" flares, 4.2's CMB waveguide and other SERM implications, below.
3. Such genesis of a Gondwanaland Archipelago is confirmed by Gondwanaland Archipelago antipodal conjugacies' providing clearest examples, Vol x, of Impact Hemispheric BOUNDARY (IHBO) regional, impacted "Right Way" flares antipodally resonant with non-impacted "Wrong Way" flares
4. Component edges of many "Right Way" and "Wrong Way" flares coincident with tectonic plate boundaries, continental shelf edges, coastlines, Fig 1 below, next paper's Figs 1, 2.
5. Within largest flares: bisectonal IHBO, extreme mineralisation.

This overall proof of my thesis has important implications, including resource implications.

Such a Method of Compositing Mercator Projections to show antipodal resonances is generally applicable to all planets. Flare, IHBO, impact ideas thus become Flare, IHBO, impact realities greatly informing prediction, as follows:

Fig 1, from w.1a, Slide 46:



REAL IHBO

IHBO details are revealed . . . multiple and/or sinuous segments along the whole of its roughly great circle length, most remarkably in the SE Asia, Australia flares.

The following problem is resolved by the sinuous Mid-Atlantic Ridge potential of Fig , 0.4 IHBO

DETAIL:

"My search for IHBO detail was most problematic between the Philippines Trench and the Macquarie-Balleny Ridge, obviously a continuation of the complexity of the archipelagoes on either side of the Philippines Trench.

More than most other IHBO segments, Australia's symmetries are evidently multiple, from Kimberley/Arnhem Land/Cape York beginnings to Tasmanian ends.

The strongest Australian symmetries pass through Arnhem Land, strongest of all through its central Dundas Strait. An interesting symmetry places the Cape York potential over the Kimberleys.

Tasmania is full of NNW-SSE axes of symmetry, from its W Coastal continental shelf to the Furneaux, Kent groups of East Bass Strait Islands, consistent with multiple Australian axis termination."

FLARED IHBO-LIMB REGIONAL IMPACTS

3.4's idea of flared antipodal conjugacies is confirmed in Fig 1 below, x.01's Fig 2. The following flare, subflare antipodal conjugacy details refer to Figs 1, 2 of the next paper:

Coincidences between Perth, South Australia Basins and North Western Atlantic Basin potentials are consistent with antipodal conjugacy genesis, North Atlantic impactors.

Coincidences between Coral, Tasman Sea Basins and Iberian, Madeira, Cape Verde Basin potentials are consistent with antipodal conjugacy genesis, sub-horizontal energisation ahead of North Atlantic impactors.

The "complexity of the archipelagoes on either side of the Philippines Trench" is revealed as likely due to near-horizontal impacts at Marianas Trench and sub-horizontal energizations ahead of them, antipodal energizations from W South American near-horizontal impacts and sub-horizontal energizations ahead of them.

Similar multiplicities, sinuosities of real IHBOs NW, SE of SE Asia and elsewhere are probably similarly explicable:

New Guinea-far NW Australia ahead of Bismark Archipelago impacts, all of Australia and surrounding seas antipodal to North Atlantic impacts;

The Patagonian taper ahead of Peru-Chile Trench near-horizontal impacts and sub-horizontal energizations ahead of them, antipodal energizations from Japan Trench-Sea of Japan-coastal Manchurian near-horizontal impacts, sub-horizontal energizations ahead of them and so on.

Coincidences between the Bering Sea and the Weddel Sea Basin potential is consistent with antipodal conjugacy genesis ahead of Bering Sea impactors, corroborated by a Right Way flare there and a strong coincidence between the far E corner of Kresta Bay in Anadyrskiy Zaliv and the Maud Rise potential.

PTB IMPACT?

Five flare potentials near Drake Passage antipodal to E Siberian, N Manchurian rivers, mountains, capes. Concentricity of Weddel Sea potential and wide curve of Lena River.

These antipodal conjugacies are consistent with impacts at junctured sources of the Yana and Kolyma Rivers, the middle of the Koryakskiy Khrebet mountains.

These seem morphologically indicated impacts are consistent with Permian-Triassic Boundary (PTB) impact genesis of the similarly flared, PTB-dated Siberian Traps.

Similarly directed, overall THESHI is thus implicated as the PTB Impact. That THESHI may not have been too energetic to have been the PTB Impactor follows from w.1a's Slides 41-45 explanation of planetary flares as serm clusters, generally not excavations.

COMET

The green, planetary scale, antipodally resonant flare shown in Fig 1 is consistent with cometary THESHI and is otherwise inexplicable.

The EurAsian-Indian Ocean faultline described in the following two sections, the largest of 3.4,'s Right Way Flares, is also consistent with cometary THESHI.

EASIO

The energetic scale of the EurAsian-Indian Ocean (EASIO) faultline, next papers Figs 1, 2, is indicated by the width of the bulge of Southern Finland as much as Indian Ocean ridges.

Nearly all of Southern Finland's lakes trend in its direction. So too nearly all of the rivers and fjords of central Norway, Northern Sweden alongside the tellingly similar span of Gulf of Bothnia deeps.

SERBILS: I propose that EASIO is the central faultline (serbil, y.02, 0.001) of a serm cluster (4.5-11) sub-horizontally energised ahead of most energetic West Arctic, AODI, North Pacific, Hawaiiin THESHII Impactors.

MACROS: EASIO's Scandinavian manifestations may be an exceptionally faithful recording, an ideal candidate for investigating rotational macros generated by multidirectional symmetries, y.02.

EUROPE-SW PACIFIC

Strong coincidences between the SW Pacific Basin and Caucasus, Black Sea, Mediterranean Sea, European Alps, British Isles potentials are consistent with antipodal conjugacy genesis, sub-horizontal energisation ahead of AODI (x.01), West Arctic (Arctic American-Greenland-Iceland) impactors.

Coincidences between New Zealand and Spain potentials and beyond are consistent with antipodal conjugacy genesis, New Zealand, Chatham Island impactors.

EURASIA-SOUTH PACIFIC

Strong coincidences between the Pacific-Antarctic Ridge and potentials of obviously a major EurAsian faultline are consistent with antipodal conjugacy genesis, sub-horizontal energisation ahead of the AODI impactor.

The EurAsian faultline is manifest as shallows joining Iceland to central Norway along the S and SE edge of the Norwegian Sea, crossing Scandinavia on either side of the Kvarken (Vaasa).

It continues as the similar trending lakes of S Finland, Lake Ladoga, Volga River basin. Refer to COMET above.

SW ASIA, INDIAN OCEAN-SE PACIFIC

Strong coincidences between the East Pacific Rise and the E edge of the Aral Sea basin, Indus River basin, Laccadive-Chagos Ridge, SW Indian Ridge potentials are consistent with antipodal conjugacy genesis, sub-horizontal energisation ahead of AODI, Laptev Sea, E coastal far NE Asia, North Pacific, Hawaiiin impactors.

AFRICA-CENTRAL PACIFIC

Coincidences between French Polynesia and Red Sea, Lower Nile and surrounding mountain potentials are consistent with antipodal conjugacy genesis, French Polynesia impactors.

Coincidences between the Tonga Trench at its Horizon Depth and Saharan lahat, Asekrem mountain potentials are consistent with antipodal conjugacy genesis, a Horizon Depth impactor.

Coincidences between the Manihiki Plateau and the Bodele, Chad depression potentials are consistent with antipodal conjugacy genesis, a Manihiki Plateau impactor.

Coincidences between the Hawaiiin island chain and Boribi Vlei, Chukudu and other rivers and faultline continuations to the SW African coast at Walvis Bay potentials from the Okavanga Swamp depression are consistent with antipodal conjugacy genesis, Hawaiiin Ridge impactors.

SOUTH ATLANTIC-NORTH PACIFIC

Coincidences between NW Pacific, NE Pacific Basins and various South Atlantic, SW Indian Ocean Basin potentials are unlikely to be a random coincidence, are consistent with antipodal conjugacy genesis ahead of North Pacific impactors.

So too South Atlantic potential coincidences antipodal to similarly trending NW Pacific Basins, ridges: South mid-Atlantic Ridge potential coincidences with Melanesian Basin, NW Pacific Basin;

Junction of Africa, South America, Antarctica Plate potentials antipodal to Aleutian Basin; Guinea Rise potential coincidences antipodal to SW edges of Central Pacific Basin deep, Mid-Pacific Seamounts;

Walvis Ridge potential coincidence with the Emperor Seamounts, Midway, SW edge of the Hawaiian Ridge; Congo River basin potential coincidence with Line Islands and so on.

Coincidences between the Central Pacific Basin, Mid-Pacific Seamounts and the Angola Basin potential are consistent with antipodal conjugacy genesis ahead of Central, Mid-Pacific impactors.

INDIAN OCEAN-NORTH AMERICA, EAST PACIFIC

Coincidences between Enderby Abyssal Plain and coastal potentials and mountainous Alaska are consistent with antipodal conjugacy genesis, Alaskan, South Alaskan coastal impactors, corroborated by associated congruency between Antarctic coast and Alaskan N shore.

Coincidences between Andes, Conrad Rise, Crozet Island potential edges and North American coast at Queen Charlotte Sound and the mouth of the Columbia River are consistent with antipodal conjugacy genesis, coastal impactors at Queen Charlotte Sound and off the mouth of the Columbia River.

Coincidences between SE Madagascar Basin potentials and California's San Andreas Faultline, San Joaquin River Valley and Sierra Nevada are consistent with antipodal conjugacy genesis, San Joaquin River Valley and Sierra Nevada (Yosemite) impactors.

Coincidences between the W end of the Australian-Antarctic Basin potential and Hudson Bay, Lake Winnipeg basin are consistent with antipodal conjugacy genesis, Hudson Bay, Lake Winnipeg impactors.

Coincidences between Kerguelen Plateau, Princess Elizabeth Trough, Valdivia Abyssal Plain potentials and NE North American tundra, Great Bear, Great Slave and other lakes, Missouri, Mississippi River sources, are consistent with antipodal conjugacy genesis, great lake, river source impactors.

Coincidences between SE Indian Ridge potentials and Missouri, Mississippi River, Great Lake basins, are consistent with antipodal conjugacy genesis, Missouri, Mississippi River, Great Lake impactors.

Coincidences between potentials of the SE Indian Ridge junction with Nine Yeast Ridge and 30° latitude ridge, and the mouth of Mississippi River and Bay of Mexico coast are consistent with antipodal conjugacy genesis, Lower Mississippi impactors.

Bisection of the Bay of Mexico deep by the Nine Yeast Ridge potential is consistent with antipodal conjugacy genesis, a Bay of Mexico deep impactor.

Coincidences between Mid-Indian Ocean, Cocos-Keeling Basin potentials and Central American mountains, Pacific coastal Trench are consistent with antipodal conjugacy genesis, coastal Trench impactors.

Coincidences between Bay of Bengal potentials and Galapagos Rise potentials are consistent with antipodal conjugacy genesis, a Galapagos Rise impactor.

EAST ASIA-SOUTH AMERICA, CHILE RISE

Coincidences between Lake Baikal and Magellan Strait potential is consistent with antipodal conjugacy genesis, a Magellan Strait impactor.

Coincidence between, concentricity of Brazil Basin continental shelf potentials and the curve of Mariana Islands and Trench are consistent with antipodal conjugacy genesis, Mariana Trench impactors.

Coincidence between Buenos Aires cape bulge potential and Shantung Peninsula is consistent with antipodal conjugacy genesis, Manchurian/Sea of Japan impactors antipodal to Argentine Basin.

Coincidence between Valova Fracture Zone potential and the Lop Nor centre of the Lop Nor sarm extending from the Himalayas to Lake Baikal, 4.23, is consistent with antipodal conjugacy genesis, a huge Valova Fracture Zone, Chile Rise-centred impactor.

ASIA-SW PACIFIC

Coincidences between Andes, Peru-Chile Trench potentials and mountainous East China, IndoChina are consistent with antipodal conjugacy genesis, Peru-Chile Trench Trench impactors.

Coincidence between Nazca Plate potentials and the Himalayas, Tibet are consistent with antipodal conjugacy genesis, Nazca Plate impactors.

ARCTICA-ANTARCTICA

Coincidences between Andes, Peru-Chile Trench potentials and mountainous East China, IndoChina are consistent with antipodal conjugacy genesis, Peru-Chile Trench Trench impactors.

FIGURES

I had produced antipodal conjugacies years earlier using Perspex templates, half of them inverted, PIRO-IRO upon a World Globe, 3.1, Vols 1, 4.

I was familiar also with what I would do here from y.01's Sketch Method of producing symmetries by matching A4 transparencies of maps against inverted A4 copies.

Culminating a long series of prediction-validations comprising the overall thesis, this Vol x Method is corroborated by that series, corroborates that series, see y.06.

This Vol x's antipodal conjugacy coincidences have been Yellow-White emphasised using the PhotoStudio techniques of y.01 Vol y Method.

REFERENCES

LEIER M., 2000. *World Atlas of the Oceans*. Penguin, Australia.