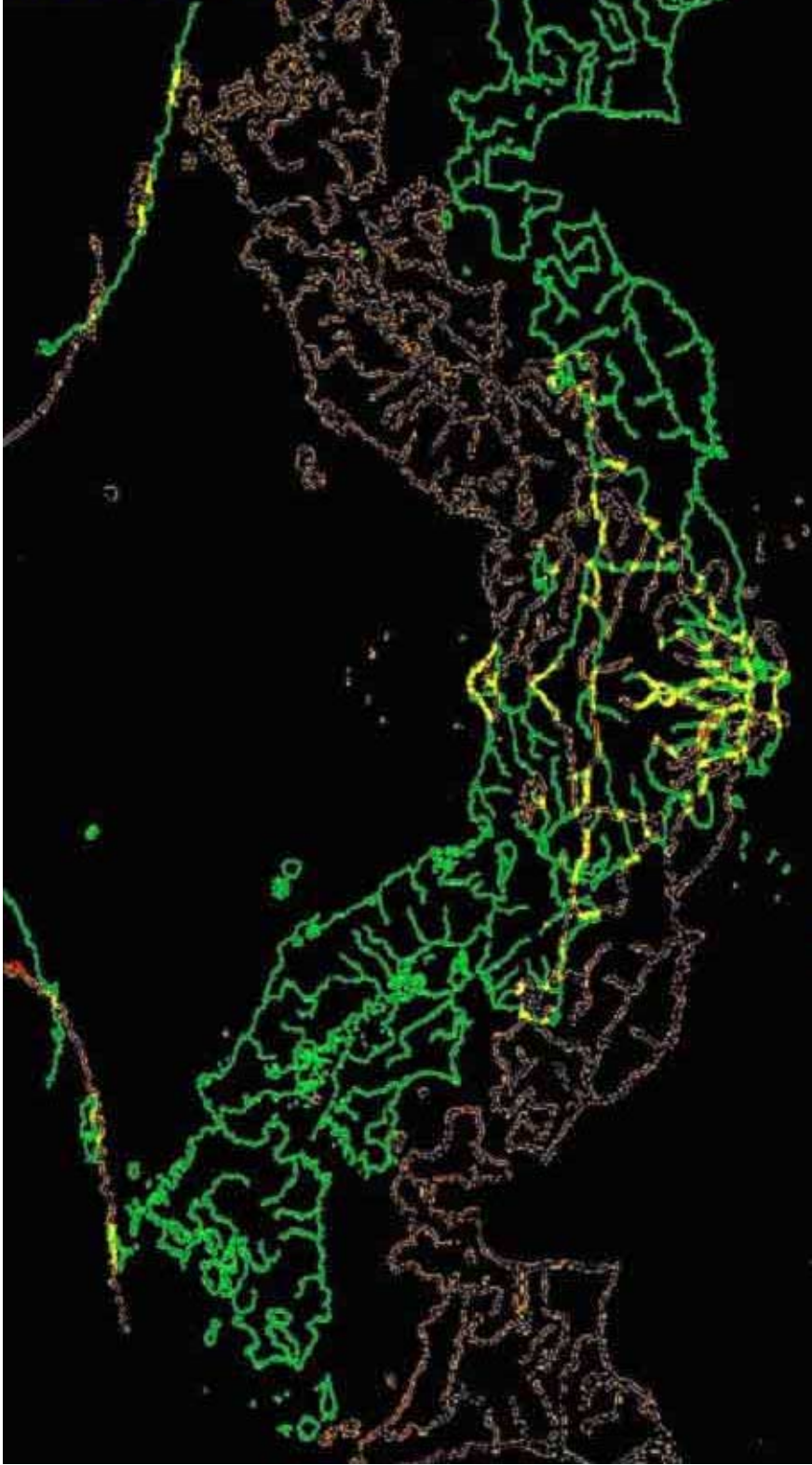


# Rotational Macros



## Spiralizing Rotational Macros

See Vol y Slide Show in Appendices.

### COVER PHOTO

One of Japan's 2nd order mantle serm, multi-directional relic symmetries, yellow coincidences of this one of my Japan slide show's 280 multi-directional serm symmetries.

The most obvious macro indication here is the overall, Jig Saw Patterned fit between green relics and brown inverse potentials.

Macros are also indicated by how the inscriptions serially connect to their neighbours during rotation, forming long linearities along relic-potentials, consistent with spiralization.

This Japan series is centred on a Gummi prefecture river junction. Axial pivot (notched blob) is a 12BA bolt joining relic, potential transparencies.

Macro-ed Jig Saw Patterns relate to macro-ed linear relic symmetries in ways which are either simple or complex.

**SIMPLE:** Where the W coast of Finland is macroed by segments of the SW Norway coastal potential, and vice versa over numerous slides, the relationship is a simple, 1-1 correspondence.

**COMPLEX:** In this Japan example, while the Jig Saw Patterns and lineal symmetry coincidences are each separately convincing, the relationship between the two aspects is complex.

**BRITISH ISLES:** The British Isles should show a similarly impressive rotational macros and Jig-Saw Patterns as Japan.