

Super Huge Impact-ed Race, Religion, History, Culture, Diplomacy

Author: Peter Nielsen

Journal Reference: Vol 5, paper 1, version 2.04 (16 April 2007 edition) of CD ebook ISBN 0-646-40916-6 at www.nodrift.com since 21 Dec 04.

Abstract: Paleo-archeological evidence that homo sapiens originated in Africa has been strongly corroborated by human mitochondrial DNA (mtDNA)/Y-chromosome phylogeography, thus confirming the "Out of Africa" hypothesis, consistent with this ebook's Meta-Geology via strong correlations and, more importantly, this corroboration is mutual. Earth's Impact Hemisphere (IH), antipodal Africa (AA), & Intermediate Region (IR) correlate with the New World/Oceania, Original World, & Old World, respectively, and the distribution of so-called Yellow, Black, & White coarse race categories (Hobson 2004) respectively, before an ~500 year period of world colonisation which has been undoing these probably causal associations. Yellow may be the colour of evolved mechanisms able to utilise nutrients and/or reject toxins in chemically enriched IH-regional soils, groundwater, better than corresponding IR, AA-regional mechanisms. One/The such key nutrient and/or toxin may be Selenium, an important nutrient and toxin concentrated in the Impact Hemisphere. The "Out of Africa" thesis, how African descendants of homo erectus were more successful than Asian, Australian descendants and so on, are thus explicable in terms of super huge impact. So too US Exceptionalism, Empires of Liberty and Justice and more: While technological progress and natural selection-driven genetic evolution may have been generally maximized by IR, IH migratory environmental challenges, which would have been greatest in Asia, complementary refinement of humanistic conventions would have had an opposite dependence on sexual selection, maximal in cul-de-sacs, in "mini-world" cities in out of the way parts of AA Africa and in "mini-Africas" globally, China, Japan, Australia and so on. Homo sapiens thus came "Out of Africa", instead of Asia where homo erectus may have originated, because homo sapiens is conventionalist, and Africa had highest sexual/natural selection ratios. Three "Out of Africa" corollaries:

Sexual selection has thus evidently been more important than natural selection in evolution of homo sapiens (hs), in contrast to evolution of homo erectus (he), where natural selection may have been most important; Homo sapiens (hs) would have evolved a dualistic mind from a bifurcated he mind (an hs-he dualism in a bifurcated he forebrain function); Hs-he dualism would have changed direction once he was largely eliminated and Other hs became hs's greatest challenge.

"The social sciences have a long way to go to catch up, but they may be up to the most important scientific business of all, if and when they finally get to the right questions."

--- Lewis Thomas

"Something that I know is not true: . . . races are biologically distinct."

--- Francis Collins

"Reason is the Devil's whore."

--- Luther

Paleo-archeological evidence that homo sapiens originated in Africa has been strongly corroborated by human mitochondrial DNA (mtDNA)/Y-chromosome phylogeography (<http://news.bbc.co.uk/1/hi/sci/tech/4543767.stm>, Macauley 2005 . . .).

The thus confirmed "Out of Africa" hypothesis corroborates this ebook's Meta-Geology via strong correlations and, more importantly, the corroboration is mutual.

The correlations of Figs 1 & 2 lead to explanations of the "Out of Africa" hypothesis, how and why African descendants of homo erectus were more successful than Asian, Australian descendants and so on.

CORRELATIONS

Earth's Impact Hemisphere (IH), antipodal Africa, & Inter-mediate Region (IR) correlate with the New World/Oceania, Original World, & Old World, respectively, and the distribution of Yellow, Black, & White coarse race categories (Hobson 2004) respectively, before an ~500 year period of world colonisation which has been undoing these probably causal associations.

Figs 1 & 2: The reddish curved line is my Impact Hemispheric Boundary (IHBO), w.1a.pps. All else is schematic:

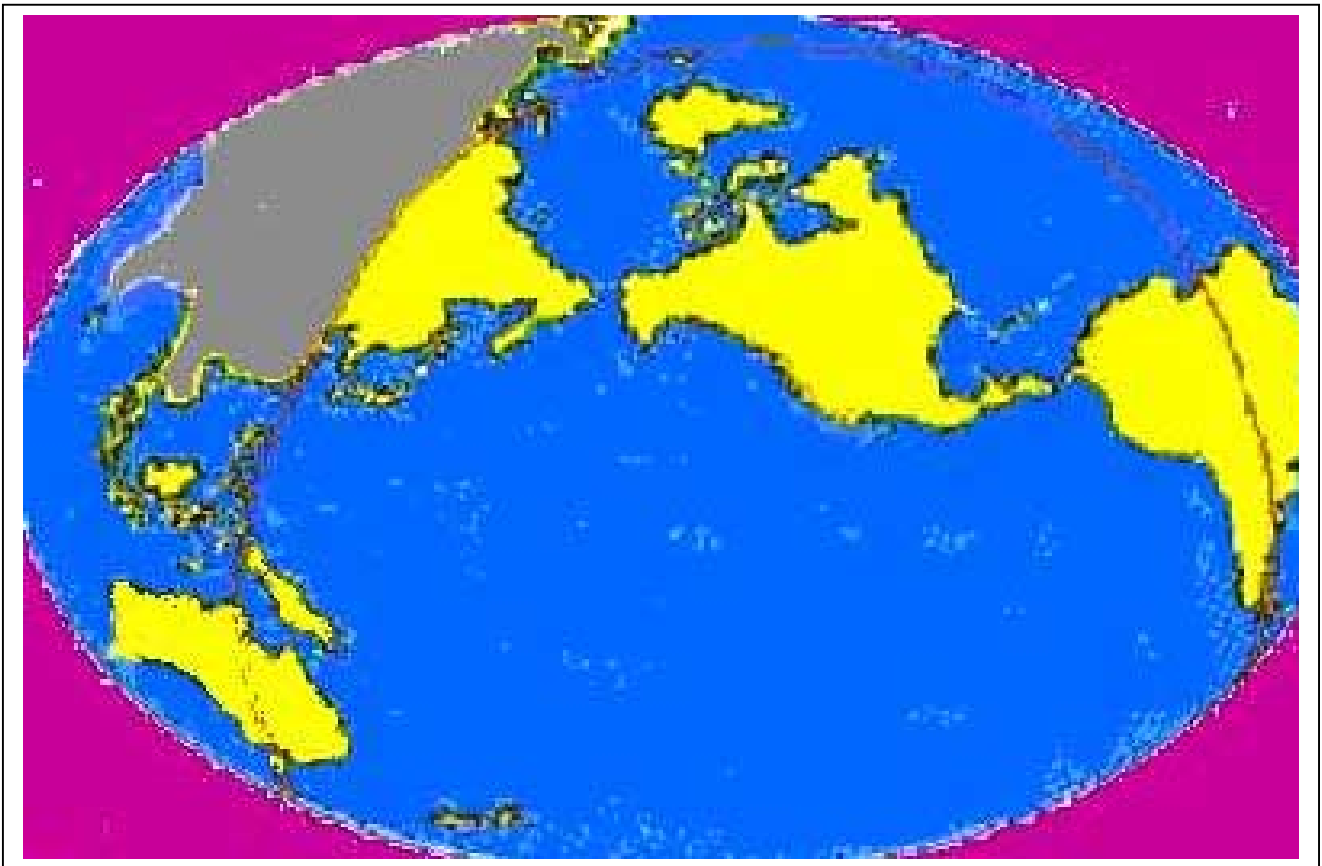


Fig 1: History, culture, diplomacy correlations are obvious. The Grey region is the Old World, Yellow Region the New World, Africa (not shown) the Original World.

CAUSAL ARROW

Any causal arrow could only be pointing from geology to politics, from super huge impact-effected differentials, of landforms, climates and so on, to meme-gene (Blackmore 1999) co-evolution.



Fig 2: The Yellow and Yellowish regions are the Impact Hemisphere (IH) and IH-IR buffer (page 22). Mutually corroborative and meaningful correlations are obvious:

1. The Yellow and Yellowish region is the region of Yellow Endemism. Yellow migrations have been mostly within this IH region also.
2. Black Antipodal Africa (AA), not shown, has long been the centre of Black endemism.

Consistently, Yellowish (Mustard) Black-White-Yellow Australia is, like Africa, largely sub-equatorial dry. Hence AA, while on page 23, I argue that Australia is uniquely AA-IR-IH. Like AA Africa and IR Europe, Australia is antipodal to & "sub-horizontally" ahead of huge impacts.

3. The White Intermediate region (IR), partly hidden, has long been the centre of White (European, Arab, Jewish, Hindu) endemisms, including world religions.

The IH-IR buffer on the IR side of IHBO is geo-morphologically, racially and religiously quasi-IH, historically, culturally, diplomatically quasi-IR. See IH-IR BUFFER, page 22.

On page 26: "The yellow region beyond IHBO in Fig 2 should . . . be pale yellow beyond mustard-coloured Australia-New Guinea".

RACE, RELIGION, CULTURE, DIPLOMACY

How could race, religion, culture have become so dispersed by super huge impact-ed geology as I claim?!? Indeed, under UNIVERSAL PROGRESS, page 38, I suggest that such dispersals may be a universal, rocky oceanic planetary, super huge impact phenomenon.

I begin to explain such dispersal of race, religion, culture on the next page, under OUT OF AFRICA. Humanistic quality multiscale dispersals begin to be explained under LOB GEOPOLITICS, page 12. Diplomacy and other complex humanistic qualities are added under DIPLOMACY, page 20, US EXCEPTIONALISM, page 35.

Similar dispersals of race, religion, culture have been explained humanistically by Hobson (2004), Blaut (1993), Orwell and others.

Blaut (1993) explains the key imperial aspect of IR culture of this paper, in his *Colonizer's Model of the World*, as follows:

". . . there is something absolutely fundamental in European culture . . . that makes Europeans different from other humans . . . their uniqueness lies not in progressiveness but aggressiveness, predatoriness, and cupidity."

DISCLAIMER

I am not proposing that all explanation of Race, Religion, History, Culture, Diplomacy can be reduced to this ebook's super huge impact (THESHI) explanation.

META-GEOLOGICAL EXPLANATION

I am only proposing that most recent super huge impact is the ultimate, Meta-Geological explanation underlying all other explanations of Race, Religion, History, Culture, Diplomacy. As I explain under IR-, IH-, AA- REGIONAL CHARACTERISTICS page 42 below:

Yellow peoples are endemic to the extremely rugged, volcanic Americas, Pacific & Arctic Ocean surrounds, the New World, Black peoples to largely sub-equatorial dry continental Africa & Australia.

White peoples are endemic to the Intermediate Region, IR, stretching from India to Ireland, N & NE coastal Africa to north central Asia, the Western part of an Old World more or less bounded by IHBO, the region which has been hosting the writing, re-writing of nearly all human history.

The simplest explanation of the IH-, AA-, IR-correlated race, religion, culture differences is that they are ultimately caused by evolutions within environments of super huge impact physics differentials, particularly between IH and non-IH, landforms, geo-chemical enrichment differentials and so on, and climate differentials produced by spin readjustment.

Subsequent to super huge, rocky oceanic impact, spin readjustment sends the most heavily impacted ocean and antipodal continent/s towards the equator, 4.2.

TETRAPODS

This human scenario is the tail end of a biological evolution of tetrapods. 5.2 Preamble:
 “The Earth and its Biosphere are resilient, having survived super huge impacts that extinguished most species, enabled radiation of survivors, notably tetrapods, ultimately humankind”.

OUT OF AFRICA

There is much evidence that “homo erectus materialised almost simultaneously in Africa, east Asia and a point in between [roughly AA-IR] . . . and that the dates do not rule out the possibility that homo erectus evolved in Asia.” (Kohn, 2006).

There is no such confusion in the case of evolution of homo sapiens however, where the evidence of paleo-anthropology and genetics strongly support “Out of Africa” theory. This is very telling. Why “Out of [AA] Africa”, not “Out of [IR] Asia”?

Macauley et al (2005) have explained how “Single, rapid coastal settlement of Asia [is] revealed by analysis of complete mitochondrial genomes”. Others have revealed “Y-chromosome phylogeography in Southeast Asia and the Pacific” (at <http://www.bradshawfoundation.com/>) and so on by analysing human mitochondrial DNA (mtDNA) and/or Y-chromosome variations.

The Chinese Human Genome Diversity Project has recently shown, by looking at Y-chromosomal DNA, that homo sapiens migrated from Africa into China by way of SE Asia 18--60,000 years ago.

This project also indicates that Polynesia was populated via Indonesia out of SE Asia. The Americas may have received some of these migrants via the Pacific Ocean.

The simplest immediate explanation of the strong Fig 1 & 2 correlations is explained just before DIFFUSIVE ENRICHMENTS, page 15 below:

The simplest explanation of the Figs 1 & 2 correlations is that Black peoples became White, Yellow as they migrated from Africa into Europe-West Asia, East Asia and beyond, due to diffusive enrichment of Old World, New World characteristics in IR, IH regions, respectively; White, Yellow characteristics in IR, IH regions, respectively.

HUMAN EVOLUTION

Such human diffusion and genetic radiation is consistent with contemporary research work on human evolution by Bruce Lahn, Christopher Wills, Gregory Cochran, Henry Harpending, Steven Pinker and others (Douglas 2006).

Lahn’s 14,000+ year old new microcephalin gene “is relatively rare in sub-Saharan Africa, and the 500+ year old new form of ASPM is most prevalent in people from Europe and the Middle East, suggesting that both mutations [of genes involved in brain development] originated in non-Africans after our ancestors migrated out of

Africa", page 33, consistent with my explanation via page 32's "rapid technological progress [and a] fast changing environment [are] exactly the conditions under which you'd expect natural selection to act". This work is also reported at:

<http://www.futurepundit.com/archives/001892.html>

Environment would generally have been changing faster for IR peoples than for less migratory AA peoples, faster still for most migratory IH peoples. IR peoples would thus generally have experienced more life threatening environmental challenges than AA peoples, IH peoples even more so.

Problem-solving technologies would thus generally have had greater survival value for IR peoples than for AA peoples, greater survival value still for IH peoples. This would have led to faster evolutions of technology amongst IR peoples than AA peoples, more rapid technological progress still amongst IH peoples, changing environments in turn, IH more than IR more than AA, consistent with histories, cultures, diplomacies and so on.

DIFFUSIVE ENRICHMENTS, page 15: "COMPLEMENTARY HUMANISTIC CONVENTIONS . . ."

While technological progress and natural selection-driven genetic evolution may have been generally maximized by IR, IH migratory environmental challenges, which would have been greatest in Asia, complementary refinement of humanistic conventions would have had an opposite dependence on sexual selection, maximal in cul-de-sacs, in "mini-world" cities in out of the way parts of AA Africa and in "mini-Africas" globally: China, Japan, Australia, New Guinea, Lake Baikal surrounds, Persia, Greece, Scandinavia, Peru, Chile, Cambodia . . ."

Homo sapiens thus came "Out of Africa", instead of Asia where homo erectus may have originated, because homo sapiens is conventionist, and Africa had highest sexual/natural selection ratios.

PREDICTION, VERIFICATION?: A comprehensive global study of all regional variations of "genes involved in brain development", an obvious thing to do anyway, would be a good way of testing this idea.

SEXUAL SELECTION THUS MOST IMPORTANT FOR HOMO SAPIENS

Homo sapien's coming "Out of [AA] Africa" in such a way has implications. Three immediate corollaries:

Sexual selection has thus evidently been more important than natural selection in evolution of homo sapiens (hs), in contrast to evolution of homo erectus (he), where natural selection may have been most important.

CORROBORATION: A particular dualism would have had survival value throughout hs evolution, so would have evolved:

he would have been hs's greatest challenge from soon after hs started being sexually selected. he occupied much the same niche and had the advantage, in a naturally selecting world, of being more naturally selected.

This challenge would have been exacerbated when hs migrated from his place of origin into the wider world of his immediate forebear, particularly when he wandered into he's probable place of origin, Asia, which he would have held on to tenaciously.

Hs individuals with a full understanding of the he mind would have had a competitive advantage over he, all other hs, so long as he was around.

Homo sapiens (hs) would have evolved a dualistic mind from a bifurcated he mind (an hs-he dualism in a bifurcated he forebrain function), bifurcation being biologically ubiquitous.

Hs-he dualism would have changed direction once he was largely eliminated and Other hs became hs's greatest challenge. "Man is wolf to man", Russian saying.

The greatest survival value in this new environment would have been in he component re-development in the direction of Other hs, multiple other hs. Our largely Other-hs-oriented imaginations are corroborative!

As the hs half of a new, hs-Other hs post-he forebrain dualism distinguished itself socially, the Other hs half may have migrated and distinguished itself psychologically. Hence our largely Other-hs-oriented imaginations! High pedigree duality/multiplicity of human psychologies, human institutions is corroborative. I propose that the soulful directors of our dreams manifest the original, ancient he half dualism.

High pedigree duality/multiplicities of human psychologies is corroborative. Socrates, Jung, Warhol, Galileo, Pythagorus, Blake, Churchill, Schumann, Gandhi, R. M. Rilke and other famous thinkers, poets, artists and scholars have described hearing voices (Thranhardt 2006). Dr. Jeckyl and Mr. Hyde is generally recognised as an important characterisation.

High pedigree duality of human institutions is corroborative, such institutions as: Upper and Lower Houses of Parliament; Separation of (Judicial from Political) Powers in Government and in Government and Corporation management (Governor and Prime Minister, Chairman of the Board and CEO); husbands and wives; bosses and deputy bosses; ubiquitous "good cop-bad cop" dualisms (Kissinger-Nixon and so on); famous duets, Holmes-Watson, Mao-Chou, Bush-Cheney and so on.

Humans have mates, become spiritual if they don't. Generally dualistically or multipliciously spiritual. Tellingly so . . .

DIFFUSIONS, RADIATIONS

Anthropologists have produced maps showing similar, small scale diffusions, of Neolithic culture into Europe out of Anatolia for example.

Out-of-Africa modern human origin is consistent with canine co-radiation: The great formal and colour diversity of dogs evolved during the last 15,000 years. [Dogs branched off from wolves only 15,000 years ago.](#)

(in: http://www.futurepundit.com/archives/cat_trends_human_evolution.html)

This shows that less extreme, human diffusion and genetic radiation "out of Africa" had enough time (60-65,000 years) to happen.

"An example of an evolutionary adaptation in humans that may have developed as recently as dogs developed from wolves occurred in [the human Andean population which developed an adaptation to high altitudes.](#)" (in: http://www.futurepundit.com/archives/cat_trends_human_evolution.html)

LOB DISPERSION

Visitors disperse along Long Ocean Beaches with one car park (LOBs), in a sociological way tellingly similar to how I have proposed humans dispersed OUT OF AFRICA:

4. Conventional families and other groups generally settle closest to car parks.
5. Least conventional walkers, joggers, horseriders, exhibitionists, voyeurs, artists and other wanderers end up furthest from car parks.
6. Moderately conventional lovers and others generally occupy an overlapping, intermediate region.

LOB GEOPOLITICAL SPECTRA

I propose that this same dispersal mechanism that LOBs display on a micro-scale, is the ultimate cause, via evolution, of the Figs 1, 2 planetary scale correlations, and ubiquitous, various mixes of micro to intermediate scale, similarly geopolitical spectra:

Conventional-unconventional/conventionist-unconventionist spectra contaminated by other dispersions, status symbol/personal presentation dispersions and so on.

The most obvious example of such mixes may be: present day national capital cities, ancient cities, ancient nations, China and so on.

The strength and coherence of "the Figs 1, 2 planetary scale LOB Geopolitical spectral dispersions" indicates that while "mixes of micro to intermediate scale, similarly geopolitical spectra" are indeed ubiquitous, such mixes are generally dominated by the planetary scale spectra.

1-D, 2-D SPECTRA: Micro-scale spectra can be seen: along streets; across suburbs; across cities; along bars; and so on.

1-Dimensional, micro-scale "LOB Geopolitical" dispersions certainly occur in under-populated regions of many beaches, such as Tasmania.

Such signals may be lost or obscured elsewhere by those contaminants, by "development" and so on, see "CASINOS" below.

There are also many 2-Dimensional such spectra, also occurring globally, possibly also least contaminated in remotest, wildest regions, see ANTARCTICA below.

EVOLUTION: Conventional families coexist on Long Ocean Beaches (LOBs) with unconventional wanderers because of extreme separations (at opposite ends of LOBs) afforded by LOB spectral dispersions, so it is easy to see on this micro-scale how multiscale such dispersions have survival value and would have evolved.

Those Figs 1, 2 planetary scale "LOB Geopolitical" spectral dispersions could thus have evolved on Earth for 10s of 1,000s of years, universally for longer. They obviously have the survival value necessary and sufficient for evolution, having been stable throughout human history, prehistory prior to the last ~500 years, more or less up to the present time.

This idea is corroborated by telling cultural resonances between LOB micro and planetary scale worlds, between New World/Oceania cultures and "least conventional . . . wanderers", between Original World cultures and "conventional families", between Old World cultures and "moderately conventional . . . others" of the intermediate region.

LOBs are thus evidently micro-scale examples of multiscale LOB Geopolitical spectra evolving globally, indeed universally (UNIVERSAL PROGRESS, page 38).

CHROMATOGRAPHY

Chromatographs disperse chemical mixtures in a tellingly LOB-similar way, into spectral representations of component pure substance diffusion rates.

These are the devices we see on TV producing the dark bands representing people's DNA genes. High Pressure Liquid Chromatographs are abbreviated: HPLCs.

LOB CHROMATOGRAPHY

The sets of human values, physical characteristics and so on which are LOB-dispersed are wide-ranging.

Regional culture is:

- Reduced by the limited number of activities which beaches are suitable for;
- Dispersed, various aspects dispersed along and between beaches in various ways;
- Skewed, by the fact that many people think LOBs are boring, rarely go to LOBs or other beaches.

The LOB segment

- Nearest the car park is generally most conventional/conventionist,
- Most distant is generally least conventional/conventionist,
- Intermediate, is moderately conventional/conventionist.

LOBs are thus broadly spectral, with segments nearest car parks generally enriched in old, conventionist values, segments most distant generally enriched in new, unconventionist values.

I have been observing 100s of such LOB dispersions in Tasmania, where many LOBs have only one carpark, rare in a world of great human population pressure.

I walk from my home to a short estuarine beach every day, along a long estuarine beach every weekend, beaches in the city complicated by more than one entrance.

I have walked along an LOB several times per year since 1981, the year I returned to Tasmania to live, 5.7. Not a random coincidence!

This LOB idea started in childhood, when those Point 5 wanderers were mostly gangs of boys like me, more active outdoors than today's Australian children.

LOB-SPECTRAL ANALOGS

There are many societal spectra, often 2-Dimensional, displaying similar dispersions.

As suggested earlier, potentially contaminating dispersions seem to happen in built-up areas, most obviously at Casinos, and so on . . .

CIVILISATION NOISE

LOB GeoPolitical spectra may require either LOB wildness or near global scale to become obvious, consistent with my "~500 years", Figs 1, 2 observations.

LOB GeoPolitical spectra may be degraded by civilisation emanations, just as canaries in mines are sensitive to gas.

Dispersion of spectators surrounding country sports fields may thus be less LOB GeoPolitical spectral than LOB dispersions. So too city spectra.

My references to "Cyborg design globalisations/evolutions" in Points 9, 10 of UNIVERSAL PROGRESS, page 38 are allusions to this idea.

CASINOS

Casinos show good examples of such noise. In Casinos, LOB GeoPolitical spectra may be largely obscured, swamped by socio-economic status symbol dispersions and so on:

The most obviously poor people diffuse to the 1 cent poker machines furthest from the \$1 machines. Those on the 2c poker machine end of the 1c machines are poorer looking than those on the other end.

Those on the 10c machine end of the 5c machines are generally richer looking than those on the other end and so on, all the way up to the \$1 machines.

Similarly obscured LOB-GeoPolitical spectra are evident at the gaming tables, with the richest looking players diffusing to the fanciest, roulette wheel end of the hall.

BIOTIC SPECTRA

Biota, most obviously humans, manifest a variety of LOB-spectra between new and old growth: New growth is childish, unconventional, old growth conventional.

Note the consistency of this explanation with 5.7's DREAMS Explanation, with how both these explanations imply a biological value to LOB-spectra.

CITY SPECTRA

City spectra are multiplied by the great variety of city practices, conventions old and new, multiscale, multi-dimensional dispersions of socio-economic status symbols and so on. City spectra may be most concentrated in places where people go to relax:

Parks, promenades, beaches, clubs, discos, cafés, bars, baths, saunas; workplace tea/coffee stations. Context software installed on cellphones may be useful for researching these spectra.

ANTARCTICA

2-Dimensional LOB-spectral equivalents may be fairly common. Australian Antarctic Research Expeditions (ANARE) bases provide good simple examples:

ANARE SPECTRA

In the 1974 ANARE expedition to Davis, extreme wanderers roamed far and wide over ~400 km² Vestfold Hills. I did many such walks, accompanying either biologists doing field work, or meteorology walkers on days off.

Our ex-Navy submariner Radio Operator ventured outside only when he had to. When walking between huts, he rarely looked around.

Everyone else was between these two extremes.

HERD, ROOKERY SPECTRA

Biologists explain a similar dispersion in animal herds. Competition between males, confronting each other directly for dominance, is spectacular.

That males furthest from the dominant male are regarded as unconventional is obvious in the pejorative description of peripheral males as "sneaky fuckers".

ELEPHANT SEALS: I spent much time in Antarctica sitting/standing amongst penguin and other bird and seal populations, including elephant seals, classically herd animals.

My impression of elephant seal "sneaky fuckers", competitors furthest from beachmasters, is that they may be the most sensitive and creative males.

PENGUINS: The concave penguin rookeries one finds at seaside arenas, as on Magnetic Island in the Vestfolds are very revealing.

My impression of penguins in some of the peripheral suburbs of this penguin city was similar to my impression of peripheral elephant seal "sneaky fuckers".

In their extreme learning situations, they had to be unusually able and creative to survive, while the fat, dominant penguins lazing on the guano flat adjacent to ocean feeding grounds did not have to be.

Peripheral penguins were socially challenged on their walks to those feeding grounds, along streams through those flats. They were physically challenged by their rocky nesting sites, consistent with:

LOB GEOPOLITICS

As explained under LOB DISPERSION:

LOBs are thus evidently micro-scale examples of multiscale LOB Geopolitical spectra occurring globally, indeed universally.

I explain the global 2-Dimensional correlations of Figs 1 & 2, other multiscale, similar spectra, via correspondences with my 1-Dimensional LOB DISPERSION model, my 2-Dimensional ANTARCTICA model.

I draw correspondences between HPLC diffusive dispersion and LOB, Antarctic dispersions, & multiscale "Out of Africa" human diffusive dispersion, points (5-1-7, 4-2-8, 6-3-9) above and below also.

Having originated in antipodal Africa (AA), humans diffused through IR into IH . . . multiscale LOB GeoPolitically . . .

LOB dispersion and global human dispersion out of AA Africa are thus seen as minimal LOB-, maximal planetary- scale extremes, of ubiquitous, multiscale, nested, wide-ranging human dispersal spectra, including conventionalism-unconventionalism spectra:

7. ~500-year-old Black AA and other, multiscale near-end culture corresponds to LOB conventionalists/ conventionists closest to car parks.
8. ~500-year-old Yellow IH and other, multiscale far-end culture corresponds to LOB wanderers remotest from car parks.
9. ~500-year-old White IR and other, multiscale intermediate culture corresponds to intermediate LOB moderates.

WIDE-RANGING SPECTRA

Human conventionalism-unconventionalism spectra are very strong, as explained above and below, under AFRICA-NORTH AMERICA, page 34 and elsewhere below. However,

Figs 1, 2 race, religion, history, culture correlations imply that human characteristics ranging well beyond conventionalisms are thus dispersed:

Other related spectra are explained in HUMANISMS, DIPLOMACIES, AFRICA-NORTH AMERICA's contrasts, US EXCEPTIONALISM and so on.

Such sets of LOB GeoPolitical spectral values obviously deserve to be evaluated sociologically, along LOBs and elsewhere . . .

LIBERTY AND JUSTICE: Such research may show that LOB visitors to furthest ends are generally more interested in liberty than justice, while visitors settling halfway along

the beaches are generally more interested in justice than liberty and so on, and that, as suggested in LIBERTY AND JUSTICE, page 14, next section below:

Unconventionalist halves of LOB dispersion spectra may thus be well described using “justice” and “liberty” as end-points.

US EXCEPTIONALISM: The important example of US exceptionalism, both ancient and contemporary, is explained at US EXCEPTIONALISM, page 35.

GEOPOLITICAL SPECTRA

EXPANSION PHASE: Figs 1 & 2 correlations are thus explained LOB-corroboratively, in terms of diffusion rate differentials across Fig 2's IH, AA, IR environment niches.

CONSOLIDATION PHASE: The HPLC correspondence is then dropped, to explain a subsequent, consolidatory, diffusive enrichment phase.

The LOB spectrum is robust. So too Antarctic human, elephant seal spectral dispersions, all others, from such small scale to planetary scale.

The LOB spectrum develops during public holidays, repeats itself on these days year after year, despite counter-active efforts of vigilantes, local councils and so on.

The evidence of Figs 1 & 2 correlations points to my Points 7-9 global spectrum having been robust, its Old World, New World connotations and so on.

To be convinced of this we do not have to research say, North America soon after the arrival of 2nd, 3rd, 4th . . . waves of humans migrating into North America.

We might just as well look at one of the last sets of arrivals, the British. Where did the British Empire begin its historical decline, having grown out of IR England? “Contraction of the British Empire” (Reynolds 2000) started with loss of North America!

It was not surprising that Britain lost control of North America first because this is LOB Geopolitically indicated. Britain lost control of North America for much the same reason that local councils, vigilantes lose control of LOB ends.

CONTEMPORANEITY: One might think that while the Figs 1, 2 global spectrum may have been robust 250 years ago, it has since been undone.

But there is no theoretical basis for such an idea, and much evidence to the contrary that multiscale LOB Geopolitics continues.

Even more contemporary robustness is explained under LIBERTY AND JUSTICE, next section, US EXCEPTIONALISM, page 35, and other sections.

MULTISCALE LOB GEOPOLITICS

US exceptionalism is corroborative of LOB Geopolitics continuing to be at least planetary scale analogous to LOB far end wanderers, as Kohut explains (2006):

“Americans are more action-oriented, individualistic in their behaviour, and more opposed to the intrusions of government than Europeans and others” (Kohut 2006a).

"Americans care more about personal freedom than about government guarantees of social justice" (Kohut 2006b).

"Americans were amongst the strongest believers that most people who fail in life have themselves to blame rather than society" (Kohut 2006c).

". . . The publics of many countries, including many Muslim countries, continue to say they enjoy American movies, songs, and TV programs. And in nearly every country of the world, U.S. scientific and technological achievements are admired" (Kohut 2006d).

BRITISH EXAMPLE: Multiscale LOB Geopolitics is corroborated by Reynold's (2000) explanation of expansion and contraction of the British Empire in "Britannia Overruled":

"In [Sir John Seeley's] account [The Expansion of England (1883)], England's imperialism within the British Isles created 'Great Britain' and then continued beyond [IR] Europe to form 'Greater Britain'. The contraction of the British Empire may well involve a reversal of the process, leading to a loosening of the bonds of the United Kingdom itself . . . The bonds of unity were not 'political or cultural consensus at home' but 'reaction to the Other beyond their shores.'" Indeed!

The Irish struggle for independence from Great Britain can thus be regarded as a smaller scale version of the USA's continental scale LOB Geopolitics.

Micro-scale LOB Geopolitical worlds, LOBs, Antarctic bases, "mini-Africas" and so on, referred to above and below are corroborative. As I explain in DIFFUSIVE ENRICHMENTS:

"COMPLEMENTARY HUMANISTIC CONVENTIONS. . .

Conventions would have been diffusively enriched globally also, climaxing in proto-cities of "mini-Africas", mini-world equivalents of conventionist LOB carpark ends (see SERM LOVE page 45), in strongly bounded cul-de-sacs, out of the [migratory] way places such as the Kasai River region of Africa, where I propose hs originated (Art, Music Point 1 below), in Australia, New Guinea, Japan, China, Lake Baikal, Persia, Athens, Scandinavia, Peru, Chile, Angkor and so on."

20TH CENTURY WRITERS, MUSICIANS, OTHER THINKERS

California's producing two of the 20th Century's greatest writers, Charles Bukowski and Philip K Dick, is corroborative of multiscale LOB Geopolitics:

Charles Bukowski came from the Californian far end of the US East-West LOB axis, at the USA far end of the planetary scale LOB axis.

SF writer Philip K Dick's original base was at the Oakland-San Rafael far end of a Bay Area LOB axis, and so on.

Many of the world's best musicians and other thinkers came out of the US West Coast. These are not random coincidences . . .

GEOPOLITICAL ENRICHMENT

The simplest explanation of the Figs 1 & 2 correlations is that Black peoples became White, Yellow as they migrated from Africa into Europe-West Asia, East Asia and beyond, due to diffusive enrichment of Old World, New World

characteristics in IR, IH regions, respectively; White, Yellow characteristics in IR, IH regions, respectively.

LIBERTY AND JUSTICE

See IH-IR BUFFER, page 22 below. I explain IH, IH-IR Buffer-centred empires of liberty and justice:

During the Cold War, the United States (US) domain was sometimes characterised as an “empire of liberty”, opposing Soviet Union (SU)-China domains as an “empire of justice” (Westad 2005).

The US is IH-centred, the SU and China IH-IR Buffer-centred. Consistently, IH-peripheral IH-IR Buffer-ed Australia and South America also figure prominently in the struggle for justice: trade unionism, feminism and so on.

While Liberty is obviously akin to IH-regional unconventionalism, justice has been most fought for in the intermediate zone: the IH-IR Buffer and adjacent IH-periphery.

Unconventionalist halves of LOB dispersion spectra may thus be well described using “justice” and “liberty” as end-points.

Those “justice” and “liberty” IH-IR Buffer, IH characterisations are thus corroborative of LOB GeoPolitics.

DIFFUSIVE ENRICHMENTS

Multi-stage gaseous diffusion was the original method used for “enriching” Uranium, U238-U235, with the reactive, fissile isotope U235, comprising smaller, more rapidly diffusive molecules.

Just as I earlier explained LOB and larger scale geopolitical diffusive enrichments in terms of an HPLC correspondence, I now refer to this U235 correspondence also.

For more details on the unique environmental challenges posed by IR, IH, AA regions, refer to IR-, IH-, AA- REGIONAL CHARACTERISTICS below:

IMPERIALISM

The Fig 1, 2 correlations are consistent with the Intermediate Region having enriched imperial cultural evolutions most extremely, ultimately globalising them, via the unique challenge of its central supercontinental, extreme global bisectonal faultline-energised geology, w.2, subject/slave society-creational, IHBO-regional, African droughts on either side of IR, latitude spread, and so on, see UNIVERSAL PROGRESS, page 38 below, IH, IR BUFFER IR-, IR-Emanant IH- Imperialisms (page 23-4) also.

EGALITARIAN MERCANTILISM

The Fig 1, 2 correlations are consistent with egalitarian, mercantilism having been most extremely enriched in the Impact Hemisphere, via the unique challenge of its circum-Pacific, maximal faultline densities, extreme ruggedness, extreme latitude spread and so on, see UNIVERSAL PROGRESS Points 1-2, below.

This IH quality would also have been multiscale enriched globally, as explained for Complementary Humanistic Conventions below.

CONTEMPORARY MERCANTILISM

The Fig 1, 2 correlations are consistent with mercantile aspects of IR-emanant imperialisms, ultimately the contemporary world, having been most enriched in the Impact Hemisphere also, see AFRICA-NORTH AMERICA below.

COMPLEMENTARY HUMANISTIC CONVENTIONS

The Fig 1, 2 correlations are consistent with humanistic conventions having been diffusively enriched most extremely in AA Africa, producing humankind's most highly developed art, music, other humanistic conventions there, via unique evolutionary challenges deriving from Africa's extreme antipodality to the Impact Hemisphere: Generally more genetic drift, higher ratios of socio-sexual selection/natural selection in AA settlements compared to IH, IR settlements and so on . . .

Conventions would have been diffusively enriched globally also, climaxing in proto-cities of "mini-Africas", mini-world equivalents of conventionist LOB carpark ends (see SERM LOVE page 45), in strongly bounded cul-de-sacs, out of the [migratory] way places such as the Kasai River region of Africa, where I propose hs originated (Art, Music Point 1 below), in Australia, New Guinea, Japan, China, Lake Baikal, Persia, Athens, Scandinavia, Peru, Chile, Angkor and so on.

While technological progress and natural selection-driven genetic evolution may have been generally maximized by IR, IH migratory environmental challenges, which would have been greatest in Asia, complementary refinement of humanistic conventions would have had an opposite dependence on sexual selection, maximal in cul-de-sacs, in "mini-world" cities in out of the way parts of AA Africa and in "mini-Africas" globally: China, Japan, Australia, New Guinea, Lake Baikal surrounds, Persia, Greece, Scandinavia, Peru, Chile, Cambodia . . .

MINI-, MICRO-, MAXI-WORLDS

If those cities at the centres of ancient civilisations were thus mini-worlds, then LOBs, villages, Antarctic bases are micro-worlds, AA, IR, IH, extreme maxi-worlds. LOB-geopolitics is thus globally multiscale.

"TWO CULTURES"

The ultimate origin of C. P. Snow's "Two Cultures" is thus explained.

CONTEMPORARY WORLD CONVENTIONS, ETHNICITIES

The much more dynamic conventions of the contemporary world are generally created by unconventional, irreverent people. The conventions of the contemporary world have thus been globally most enriched in the "melting pots" of extremely unconventional centres of particular global cities, particularly of the USA (consistent with Fig 1, 2 correlations), via extremely conventional parts of Africa and "mini-Africas" elsewhere. Hence the iconic conventions, ethnicities of contemporary discourse:

Jazz, Rhythm and Blues, Confucian, Samurai, Hindu, Roman, Renaissance, Gentleman, the world's religions and so on.

ART, MUSIC

Humanistic art, musical cultures of IR-emanant imperialisms, ultimately of the contemporary world have thus been informed/enriched by earlier enrichments within parts of Africa and within "mini-Africas" globally.

Contemporary art thus strongly derives from the art of "out of the way parts of AA Africa and in "mini-Africas" globally":

1. The African wooden sculptures from the Kasai River region which inspired Cubism. A telling coincidence:
Bonobos, the most conventional chimpanzees and our nearest relatives in the chimpanzee world, occupy this region on the S side of the Congo River. Hence my proposition that hs started here.
2. The wooden sculptures from New Guinea which inspired German Expressionism,
3. The Japanese woodblock prints which inspired Impressionism/Post-Impressionism, and so on.

CORROBORATION OF THIS AND ENCOMPASSING IDEAS: This idea that "humanistic art, musical cultures . . . of the contemporary world have thus been informed/enriched by earlier enrichments within parts of Africa and within "mini-Africas" globally" would be strongly corroborated (along with this paper's subthesis AND my overall ebook thesis) by any mtDNA/Y-chromosome phylogeographical finding that homo sapiens originated in or near Africa's Kasai River region.

This is implicit in my OUT OF AFRICA explanation, pages 5-6, particularly its important corollary:

"Conventions are very much a product of sexual selection. Sexual selection has thus evidently been more important than natural selection in evolution of homo sapiens, in contrast to evolution of homo erectus, where natural selection may have been more important than sexual selection."

CONTEMPORARY CULTURE

Contemporary global culture is thus seen as having emanated from North America because it is the only IH continent.

Contemporary global culture has been vitalised, there at the periphery of the world by peripheral individuals, via global city mini-world conventions, most importantly African art, music conventions, because Africa is the only AA continent, with the telling exception of Australia, the aboriginal art and music of which is corroboratively strong.

Could the importances of all those Afro-American Blues singers who were under-recorded before they died, as late as 1969, have thus been predicted !?!?!? . . .

How ELSE?

Figs 1 & 2 correlations are otherwise inexplicable. Corresponding LOB-geo-physiological enrichment manifestations:

SKIN TONES

Wobble minimizing changes to spin, 4.2, SPIN READJUSTMENT, have sent the AA regions, and the SE Asian end of IR, IH regions to the equator, the North Atlantic end of the IR region to high latitudes.

IR regional blondness, an adaptation to low light at high latitudes, opposite African, Australian blackness, are thus directly related to super huge impact initiated spin readjustment.

AA sub-equatorial/equatorial, continental Africa, Australia are drought prone, maximally sunlit, eliminating any tendencies in these places to blondness

SIZE VARIATIONS

Equatorial IH coastal fertility and extreme ruggedness would have favoured jungle survival, hunting, coastal fishing, grass and timber architecture, rice farming.

These activities would have eliminated tendencies to bigness, tallness. Sunny, hot, AA savannah hunting and herding would have favoured tall, dark people, eliminated tendencies to shortness

SKIN COLOURS

Consistent with 4.16 explanation:

IH crust is shattered, like window glass surrounding a bullet hole, by orders of magnitude more energetic shock waves than antipodal crust.

IH crust is thus orders of magnitude most shattered. IH environments would contain orders of magnitude more faultlines than IR, AA regions. This would be a good way of testing this paper's thesis.

Humans and other animals drink water, eat plants. Plants get their nutrients from groundwater, which tends to follow faultlines. Groundwater and plants in IH environments would thus be chemically enriched.

IH-regional peoples would thus be exposed, through what they eat and drink, to a wider variety of trace elements and other chemicals than IR, AA regional peoples.

IH "YELLOW": Such differentials would not have to be very great to have biological impacts sufficient to explain our correlations, CORRELATIONS above.

IH-regional "yellow" may thus be a reflection of evolved tissue type adaptations to IH-environmental enrichments of chemicals, possibly very few chemicals.

Yellow may thus be the colour of evolved mechanisms able to utilise nutrients and/or reject toxins in chemically enriched IH-regional soils, groundwater, better than corresponding IR, AA-regional mechanisms.

SELENIUM?: One/The such key nutrient and/or toxin may be Selenium. Selenium is an important nutrient and toxin concentrated in the Impact Hemisphere.

Of World Selenium Resource countries (Mineral Commodity Summaries 2004), all but the last-listed country with the smallest resource, and the Philippines with the 2nd smallest resource, just over the Philippines Trench IHBO horizon, are in the Impact Hemisphere, in the most heavily impacted Americas indeed.

IR "WHITE", "BROWN": IR environments, such as the Middle East, would be relatively rich in oil, salts released super-abundantly in IH, AA environments, 4.16.

Adaptations to these light minerals may well have included tissue type/skin colour differentials in addition to sunlight-effected blondness, brown-ness.

HUMANISMS

GREAT UNDOING

An ~500 year IR-emanant Western hegemony (Hobson 2004) has been undoing the Figs 1 & 2 correlations . . .

CORRELATED DECLINE?

The greatest achievements in the humanistic disciplines are said to have been fading since about the start of this undoing (Carroll 2004) . . .

A candidate causal connection mechanism is obvious: Human biological and cultural consequences of grief and injustice caused by invasion.

In destroying native cultures globally, Western colonisation of the world may have been destroying important foundations of all humanisms.

LIBERTY AND JUSTICE explanation of "IH, IH-IR Buffer-centred empires of liberty and justice", page 14, is corroborative.

The simplest explanation of any correlation between the rise of an IR-emanant Western world hegemony and any decline of Humanistic Disciplinary achievement, is that world race, religion, culture humanisms have important centres of endemism in AA, IH fields of destruction, see IH, IR BUFFER IR-, IR-Emanant IH- Imperialisms (page 23-4).

CAUSAL, NOT RANDOM

It is unlikely that the above correlations are random coincidences, because of their coherence, mutual consistency, and the fact that IHBO was arrived at years before discovery of these correlations, over a period of many years via independent, scientific approaches (volumes of this ebook), culminating in w.1-w.2 explanations.

HUMANISTIC ECOLOGY

What would those humanisms that have been fading be? What were the humanisms that flowered so brilliantly in the West from the time of Renaissance-centred trade with the Orient to the time of Shakespeare?

In *IMPACT HEMISPHERIC CULTURE*, page 43 below, consistent with Hobson (2004): “Point 6 in *UNIVERSAL PROGRESS*, page 38 above:

“The major drivers of such oscillations may be buffers/moderators/mediators emanant from Impact Hemispheres, manifest as (in a word): humanisms” . . .

The connotation of this single word “humanisms” describing “world race, religion, culture humanisms [for which the Impact Hemisphere is, with Africa, one of two] key centres of endemism” must obviously include all vital qualities necessary and sufficient to explain the CORRELATIONS.”

7 DAYS OF CREATION

My elder sister pointed out that y.01’s “2-week super huge earthquake” is exactly twice as long as the Bible’s 7 days of Creation.

The similarity is actually stronger than that: 2 weeks is the approximate time I calculated for my “. . . 350 distinctive candidate symmetries” to have been inscribed, 1 for each of 350 diminishing mantle resonances, rounded up to the nearest number of weeks . . . My recollection is that my very rough time estimation was ~10 days.

I rounded this up to 2 weeks rather than down to 1 week because I did not want to leave important, albeit least energetic, terminal inscription effects out, extreme spiralizations, y.04-5, which I was very much into at the time, in Volume y.

This was also because 2 weeks sounded twice as impressive as 1 week, or 7 days to the politically naïve physicist . . . Thinking about it now:

Only most energised, spiralized regions would have experienced so many as 350 rotationally inscriptive resonances (super huge earthquakes).

Most places we see today would have been fully, or almost fully inscribed by closer to 200 multi-directional symmetries . . .

So this ebook’s non-Continental Drift-ing Earth would indeed have been faultline-“inscribed” by THESHI shock waves after 7 days.

ANTHROPIC PRINCIPLE

This Ebook’s Super Huge Impact (THESHI) was a perfectly sized impact.

“ 7 days of Creation” and thus this ebook’s encompassing thesis are, importantly, consistent with the Anthropic Principle:

Had THESHI been very much larger or smaller, the course of evolution would have been different. There would not have been any humans . . .

CIVILIZATION ONE

And Creation would not have lasted 7 days . . . One explanation of this coincidence is via a further consistency:

It could be added to coincidences listed in “Civilisation One” (Knight and Butler 2004), <http://www.civilizationone.com>.

This and other theory of highly advanced prehistoric civilisation are mutually corroborative with my ebook thesis, via above explanation.

GAIA, GLOBAL MIND

Gaian (Lovelock 1988), Global Mind (Swegen 1995) ideas are also mutually corroborative with my ebook thesis, via above explanation.

DIPLOMACIES

LIBERTY AND JUSTICE, page 14, is relevant to this section. As explained in the Fig 2 caption:

“Geo-morphologically, racially and religiously IH, the IH-IR buffer in IR beyond IHBO is historically, diplomatically IR.” The IH-IR buffer can be weakly or strongly defined, see IH-IR BUFFER, page 22 below.

ORWELLIAN OCEANIA

George Orwell’s “1984” Oceania is a classic late-IR imperial fantasy inspired by world oceanic empires, particularly the British Empire.

ORWELLIAN EURASIA

Orwell’s monolithic EurAsia is a classic late-IR imperial fantasy inspired by the Swedish Viking’s experience of a “limitless land”, subsequently the Russian Empire.

IR IMPERIAL DIPLOMACIES

That these fantasies are typically IR-imperial is corroborated by Napoleonic, Hitlerian invasions of Russia. It hardly matters what the stated rationales, subsequent explanations were.

CONTEMPORARY DIPLOMACIES

A more contemporary example is explained in IH-IR BUFFER, IR Diplomacy? below:

“IR EXTENSION?: . . . countervailing possibilities:

China and SE Asia remaining with India in the IR beyond the IH-extension, where my IHBO strictly places them, see my “MULTISCALE LOB GEOPOLITICS”, page 13. AA-IR-IH Australia may . . . ultimately tip the same way . . .”

Contemporary diplomacies thus show a similar consistency with super huge impact ultimate genesis, again independent of explanations:

THESIS CORROBORATIONS

That the IR-regional monolithic EurAsia fantasy was never realised is corroborative of this paper’s LOB GEOPOLITICS subthesis.

The difference between the Orwellian division of the world into EurAsia, Oceania and my scientific, IHBO division reveals the imperial bias of the IR-Orwellian fantasy.

That the difference regions, Russia, China and so on, figure strongly in contemporary diplomacy independent of the EU, is corroborative of my overall thesis via my LOB GEOPOLITICS subthesis.

So too IH-regional USA's also decreasingly serving the interests of the Intermediate Region it started as a colony of, increasingly serving the interests of where it is, the Impact Hemisphere. Further corroboratively:

"WAR AGAINST TERROR": Opposition to the Iraq theatre of the "War Against Terror" is led by Rumsfeld's "Old Europe", the IR-imperial heart of the Old World.

9/11 Conspiracy theory, that 9/11 was allowed to happen, embellished, even totally engineered in the US, to justify a series of SW Asian wars and so on, has been most virulent in Paris and Berlin.

Consistently, Paris and Berlin have since taken the lead in exposing CIA "extraordinary rendition" operations, secret CIA prisons in Eastern Europe and so on, Dec 2005.

IH-EXTENSION: My allocation of the IH-extension of Fig 2 to the Impact Hemisphere is explained in IH-IR BUFFER below. It roughly comprises Russia and China.

IH-"WAR AGAINST TERROR": The "War Against Terror" 's US allies includes most of Oceania AND Russia and China. The "War Against Terror" can thus be thought of as IH-emanant, a war fought in the interests of the Impact Hemisphere and IH-extension.

EU CONTAINMENT: This points to another idea consistent with contemporary European globalist diplomacies: Containment of the EU at the Ukraine.

That Russia figures prominently, on the IH side of this putatively IR-IH struggle is again corroborative of my IH-IR buffer idea, LOB GEOPOLITICS subthesis, super huge impact ultimate genesis of contemporary diplomacies and so on.

ORWELLIAN BUSH

While George Orwell's Oceania roughly correlates with US President Bush's 2003-4 "Coalition of the Willing", and together with Russia and China comprise IH and the IH extension, Bush's "Axis of Evil" is borderline IH-extension-al.

SUPER HUGE IMPACT-ED HISTORY, CULTURE

History, culture is thus explained in terms of super huge impact, (super huge impact-ed).

GEOPOLITICAL GURUS

We may thus evidently not be as free-willed, our states not as democratic as we like to imagine . . .

Many geo-political gurus have been approaching the geopolitical truths underlying this paper's scientific explanation via arcane humanistic routes, Orwell's Oceania and so on, much as I have been approaching them via arcane scientific routes . . .

SOCIAL IMPACT

The geopolitical thinking of such gurus will be progressed by this paper's complementary explanation, given that its truths have been so closely approached by them without it . . .

Secret and open struggles, of the "War Against Terrorism", "Homeland Security" and so on, may become more rational, efficient, effective, successful, less wasteful and so on . . .

These awesome, "Galilean" implications delayed release . . . see 5.6 RESOLUTION.

IH-IR BUFFER

Recall earlier explanation of the IH-IR Buffer, particularly LIBERTY AND JUSTICE explanation of "IH, IH-IR Buffer-centred empires of liberty and justice" on page 14.

While the IH-IR buffer is thus obviously, ultimately LOB Geopolitical meta-sociological, it will in the meantime be realized largely politically and sociologically. Hence my "MULTISCALE LOB GEOPOLITICS", page 13. Hence also Fig 2 caption explanation:

"The IH-IR buffer on the IR side of IHBO is geo-morphologically, racially and religiously quasi-IH, historically, culturally, diplomatically quasi-IR."

STRONG, WEAK DEFINITIONS

One could argue that IHBO-bisectional, circum-IH-Pacific Ocean continental Australia and South America may be predominantly IH:

Australia is at the far end of a circum-Indian Ocean AA-IR-IH macro-quasi-LOB geopolitical spectrum starting at Africa or West Asia. South America is at the far end of a AA-IR-IH macro-quasi-LOB geopolitical spectrum starting from AA Africa, at the far end of a circum-Pacific Ocean such spectrum starting from SE Asia, AA-IR-IH Australia.

There are no planetary or other scale LOB geopolitical spectral indications of any EU-Russian Federation spanning the EurAsian supercontinent, while any such union would be profoundly IHBO-bisectional, provocatively so from a "strong" IH perspective.

So, if the Russian Federation continues to have an IHBO-bisectional future, it would most likely be, like Australia and South Americas' IHBO-bisectional futures:

IH-oriented, consistent with recent Russian Federation history: Loss of Eastern Europe and the Ukraine; the 6 July 05 line up of EU, Chinese and Russia leaders countering US moves in Central Asia and so on.

STRONG DEFINITION: I call such attempts at ultimate meta-sociological LOB GeoPolitical definition "strong", sociological definitions unconcerned with ultimate causation, "weak", Ultimate Definition, page 26.

My original idea, the original, strong form of my theory is that an IHBO continental limb regional, LOB GeoPolitical (racial and so on), IH-extension into IR, roughly comprises:

1. The mountains and deserts between the Yellow Sea and the Caucasus and beyond, including nearly all of China and Russia, and that this is
2. Geologically quasi-IH due to extreme, "Double Whammy", 3.4, indirect energisations:

Antipodal to extreme SE Pacific-W South America, North Atlantic impactors AND "Sub-horizontally" ahead of W & NW Pacific, Siberian, Arctic & Central Pacific Ocean impactors, consistent with w.1a Slide 46 flares.

I propose that this geological "Balkanisation" was the ultimate cause, LOB Geopolitically, of the above-captioned IH-extensional humanistic credentials, via:

- Altitude in Tibet and the mountains between Tibet and the Caucasus,
- Latitude and "limitless land", much of it maze-like or desert, in Russia and Australia,
- Land connection to the Impact Hemisphere . . .

This original definition of the IH-IR Buffer was consistent with Mongolian Empires' more or less filling the IH-IR Buffer AND never going far beyond it, particularly along the IHBO boundary, where these largest of the world's empires started from, Ghenghis Khan's straddling IHBO SE of Lake Baikal.

WEAK DEFINITION POSSIBILITIES: A weakly defined IH-extension may or may not include China and SE Asia, consistent with those IR-characteristic Mongolian Empires.

AA-IR-IH Australia could move between IH-, IR-, IH-IR-, AA- extensions, South America also . . . See "Weak" Definition below.

GOOD TEST

It occurred to me as I was writing "the mountains between Tibet and the Caucasus" that this is pretty close to political Islam country, and the "Axis of Evil" straddles it.

The fates of political Islam and the "Axis of Evil", both very contemporary (13 Nov. 06), may thus be a good test of my theory . . .

EXCEPTIONAL IRAN: Peripheral, most mountainous Iran is corroborative.

Most obviously IH-extensional in "strong" and "weak" senses, Iran is a serious rival to the IR/IR-emanant "Western World".

That Iran's UN Security Council allies tend to be almost all remaining IH-extensional powers in "strong" and "weak" senses, Russia and China, is corroborative.

IR-, IR-EMANANT IH- IMPERIALISMS

The IH US is largely IR-emanant. So too, largely, the IH/IH-IR Russian Federation.

The recent imperialisms of these two IR-emanant IH powers, inspired by earlier IR imperialisms, is corroborative of:

My projection, Points 0, 1 in UNIVERSAL PROGRESS, below, of IRs as universal centres of endemism of planetary Imperialisms.

Consistently, anti-imperialisms, moral and political philosophies and so on, have generally also been IR-emanant. Weber, Marx, Orwell and so on were European.

No surprise then that political Islam has been getting most of its inspiration, money, key personnel and so on from the IR-region: Saudi Arabia, Egypt, Yemen.

OIL WAR?

“The War Against Terror” encompasses those political Islam mountains which, we are often reminded, contain much oil.

Oil-poor IH is the biggest consumer of oil . . . while my IH-IR-buffer “political Islam country” is adjacent to the world’s biggest IR oil reserves.

“WEAK” DEFINITION

An obvious “weak” way to determine the IH-extension boundary, and corroborate “the geopolitical truths underlying this paper’s scientific explanation”, would be to see which IHBO variations produce the most plausible, immediate explanations of history, not least importantly recent history, contemporary intelligence and so on.

“STRONG” CANDIDACIES: My original, “strong” “IH-extension” is rich in fruitful “weak” candidacies encompassing regions/countries which happen to be politically sensitive at the present time:

SE Asia, China, much of Russia, “Axis of Evil” and political Islam country, see CORROBORATIONS below.

IR-EXTENSION?

The 12 April 2005 “Strategic partnership for peace and prosperity” between China and India suggests IR-extensional candidacies counter to my LOB geopolitical “IH-extension”, consistent with IR-characteristic Mongolian Empires, see IH-IR BUFFER:

China and SE Asia remaining with India in the IR where my IHBO strictly places them. AA-IR-IH Australia may then be expected to tip the same way ultimately . . .

Furthermore, since IR-emanant “political Islam country” is also strictly IR, perhaps it too should be regarded as IR. My IH-extension would then be reduced to Russia.

Such a grouping has the advantage of making the “War Against Terrorism”, continuing troubles between China and Japan, explicable as IR-IH struggles.

CORROBORATION: A simple, IH-extensional Russia would thus be neatly complemented by a similarly sized, IR-extensional Australia . . . corroboratively so . . .

An already strong Fig 2 correlation would thus be enhanced, made very strong indeed. Such corroboration is furthermore publicly validating.

My original “strong” definition seemed diluted by the 12 April 2005 news . . . Its timing was inconvenient also, coming on the eve of a key CD release of this ebook . . .

IR CHALLENGE

The IH-IR buffer implications of that 12 April 2005 news are thus a challenge to this paper’s original IH-extensional LOB Geopolitical definition:

The “mountains and deserts between the Yellow Sea and the Caucasus and beyond” are ultimately, endemically the IH-extension.

SOUTH ASIAN TEST

The 12 April 2005 news provides a good test of the “strong” form of my theory, which predicts that such cross-boundary unions generally fail.

We are lucky to get such a test example in this South Asian region that rarely gets them, unlike Russian, rich in tests, see RUSSIA, A KEY TEST, page 27.

My “strong” intuition was thus not down for long. . . . The Chinese move could be interpreted from a “strong” point of view.

That avalanche probably includes the “nuclear deal” between the US and Nuclear non-Proliferation Treaty (NPT) India of 3 March 2006

<http://www.washingtonpost.com/wp-dyn/content/article/2006/03/02/AR2006030200183.html>

ALREADY CORROBORATIVE

That this [US-India] “nuclear deal” is already in trouble, 9 Mar 06, as at

http://www.economist.com/displayStory.cfm?story_id=5603449

strongly, widely opposed by 13 Mar 06, as at

http://www.economist.com/background/displayBackground.cfm?story_id=5603449 ,

as just predicted by the “strong” form of my theory, is thus already corroborative.

IR-EMANANCE, ULTIMATELY?

IR is the most obvious beneficiary of events associated with that 12 April 2005 news, IH the most obvious loser, consistent with IR-emanance ultimately, and many other indications of IR extreme cunning.

Is that avalanche the work of some of those IR gurus of the last section . . . The IR exacerbating IH troubles while the US is busy in Iraq . . . IR diplomacy à la

<http://www.countercurrents.org/us-polya110805.htm> and so on?

So too other IH-IH troubles?!: Within Korea, between North Korea and its neighbours; between the US and Iran; between the US and China . . . ?!?

Communist Party leadership of China has long been legitimised by its victorious war of liberation against Imperialism, not least importantly Japanese Imperialism.

Living memory of that struggle is fading. Time is running out. Meanwhile denials loom large on both sides. Troubles between China and Japan are easily triggered . . .

But IR extreme cunning is also consistent with China, a central part of the Old World, the “oldest continuous civilization in the world”, being IR, on the IR side of IHBO.

CHINA, IR OR IH?

China may thus be intrinsically IR as much as IH . . . Chinese civilisation can also be regarded as an IR island centered on the coastal plains between the Yellow Sea and those “mountains and deserts between the Yellow Sea and the Caucasus and beyond” of my original definition of the IH-extension . . .

IH-IR BUFFER CANDIDACIES

Since 12 April 2005, China has thus been an obvious, contemporary IH-IR Buffer candidate . . . so too all of Australia . . . indeed, the whole yellow region beyond IHBO in Fig 2, and Antarctica.

The yellow region beyond IHBO in Fig 2, beyond mustard-coloured Australia-New Guinea, should thus be pale yellow.

POWER POLITICS

Like national boundaries, IH-IR buffers can be expected to become socio-political variables defined by power brokers, governmental authorities, geographers, map makers . . .

And geo-political gurus . . . CORROBORATIONS below . . .

“MEAT IN A SANDWICH”

The putative SW Asian oil war marchland, the “-Stan States”, happens to be that part of my IH-IR buffer sandwiched between China and Russia . . .

ULTIMATE DEFINITION

My only non-negotiable claim is that most recent super huge impact is the ultimate cause of the Figs 1, 2-indicated coarse correlations.

That race, religion, history, culture, diplomacy have all independently, coherently correlated in much the same way in Figs 1 & 2, through all refinements of my arguments, is the clincher.

The fundamentals of this paper, indeed of the whole ebook, including my original “strong” idea of the IH-IR buffer as an “IH-extension” has hardly changed through all my reflections, over many years of development, notwithstanding my (from page 23):

“STRONG, WEAK DEFINITIONS

One could argue that IHBO-bisectional, circum-IH-Pacific Ocean continental Australia and South America may be predominantly IH:

Australia is at the far end of a circum-Indian Ocean AA-IR-IH macro-quasi-LOB geopolitical spectrum starting at Africa or West Asia. South America is at the far end of a AA-IR-IH macro-quasi-LOB geopolitical spectrum starting from AA Africa, at the far end of a circum-Pacific Ocean such spectrum starting from SE Asia, AA-IR-IH Australia.”

This consistency is significant because I am a real mind changer. I propose the following convergently sociological AND meta-sociological defining principle:

The IH-IR buffer is simply a tool used to maximize those racial, religious, historical correlations with IH, IR, AA regions indicated in Figs 1 & 2.

GREATEST GOOD

Such definition of the IH-IR Buffer would tend to maximize Good ultimately, if adopted, as a consequence of its being a corollary of a Truth-ful LOB GeoPolitical theory . . .

SCIENTIFIC ECHELONS . . .

A scientific basis is thus indicated for post-Cold War political decision-making, analysis and interpretation of current events, for setting up new Intelligence echelons and so on.

ITER TEST

An obvious contemporary (29 June 2005) test of strong and weak versions of this idea, will be the consequences of the decision to site the International Thermonuclear

Experimental Reactor (ITER) in France instead of Japan, in which China's vote against Japan was critical.

If the ITER decision turns out to have been right, then China could be seen as probably more IR- than IH-extensional, vice versa if wrong.

The Strong version of my theory indicates that on such a serious issue, IH-extensional China should generally side with IH Japan. The ITER decision against Japan is thus indicated as most likely having been wrong, as ultimately more likely to do more harm than good and so on.

RUSSIA, A KEY TEST

Russian history strongly corroborates the strong version of my theory. Recall references to Russia in *LIBERTY AND JUSTICE*, page 14, and *IH-IR BUFFER'S* (page 23):

"There are no planetary or other scale LOB geopolitical spectral indications of any EU-Russian Federation spanning the EurAsian supercontinent, while any such union would be profoundly IHBO-bisectional, provocatively so from a "strong" IH perspective.

So, if the Russian Federation continues to have an IHBO-bisectional future, it would most likely be, like Australia and South Americas' IHBO-bisectional futures:

IH-oriented, consistent with recent Russian Federation history: Loss of Eastern Europe and the Ukraine; the 6 July 05 line up of EU, Chinese and Russia leaders countering US moves in Central Asia and so on."

This prediction is a key Russian test of my theory. Those key powers presumably see Central Asia as their "meat in [their] sandwich" not the US's.

A related, longer term key Russian test is the "White" claim by "White Power" / "Blood and Honour" enthusiasts to all of Northern EurAsia.

This claim recalls "Orwellian EurAsia", under *DIPLOMACIES*, page 20. Ultimate defeat of this claim would corroborate my theory.

RUSSIAN SECTOR

Anticipating troubles defining the Russian sector of Fig 2, I settled for the conventional line between Europe and Asia as my main Russian Federation IH-extension boundary.

This was a compromise struck with a kinematic intuition, 5.7, which had me originally draw all of European Russia into my "strong" IH-extension, which included Scandinavia.

In the light of recent events in Belarus and the Ukraine, this compromise seems conservative. I should have followed my intuition.

LIEBENSRAUM

"Old Europe" is more familiar with global dominance than any other Earth region . . .

What is 50 years of peace after 500 years of global colonisation? Old Europe no longer "rules the waves" only because of last century's IR-emanant, IR-destructive WWs 1 & 2 . . .

Many fear that "Old Europe" may be more or less "hooked" on global dominance, the last traces of which remain in many living memories.

Russia and the "Nation of Islam" have been the last big victim of Old Europe, after having been amongst the first, after Africa . . .

But Russia clearly has a greater chance of staying free of Old Europe than Africa . . . Indeed, that has clearly been a top national, defining priority of Russia.

Hence Russian resistance to the contemporary (25 Oct. 06) EU push to jointly develop Russia's energy reserves.

Unlike the "Nation of Islam", Russia has generally been considered European, not least by its own people, an obvious place for European expansion, "Liebensraum" and so on. Rumours persist that Russia will eventually belong to the EU . . .

UNEXPLAINED PARADOX

Yet all such visions have paradoxically failed. All attempts at realisation have paradoxically failed.

No explanation of this paradox has ever been offered by any contemporary discipline, including Geology, prior to this paper's . . .

LIMITLESS LAND

Russians have been so taken advantage of for thinking of themselves as European that one might think of them as having been "framed" to think that way, ultimately due to the extreme vulnerability of their "limitless land", as the Vikings spoke of it, consistent with the "strong" version of my thesis.

Russia is thus easily seen as an IH-extensional region diffusively enriching Asian IH rather than European IR qualities, values . . .

LIMITED LAND

It has been easy for me to come up with this idea from living in Tasmania, an opposite, limited land.

Island Tasmania has gained much from non-connection to Australia, island-continental Australia much from non-connection to SE Asia, much from non-connection to the rest of the world . . .

PLAUSIBLE PLAYS

Much talk is diplomatic . . . The following contemporary plays are consistent with the strong IH-extension explanation:

Whenever Russians talk about joining Europe, it is about trade, or Russia playing the EU card against China, the US and so on. Just as consistently:

Whenever US Americans talk about joining Europe, it is about trade, or the US playing an EU card against Russia, China and so on . . .

No other geopolitical theories are so strongly corroborated as this paper's by contemporary diplomacies, Russian diplomacies for example, long seen as paradoxical.

GEOPOLITICAL OTHER

Russia's super huge impact-indicated interests, like the US's, are directed away from "Old Europe", the old hegemon, towards the Impact Hemisphere, but Europe strongly influences its former colonies

GLOBILISATIONS

Will this European influence yield a sort of super-EU Law & Order union globalisation, or IR-moderation of an IH-dominated globalisation?

Will more or less longitudinal trading blocs form and strengthen: say IR-AA, Eastern IH, Western IH blocs? What institutions would be needed to prevent any 2 from ganging up against the other 1?

How many of their institutions will be inspired by EU models? How many by US, other models? Will cultural antipodal resonances be important:

North Atlantic-Australia, East Asia-South America antipodal resonances following the example of a US-India Information Technology (IT)-initiated antipodal resonance?

COLD WAR

This section is a particular development of LIBERTY AND JUSTICE , page 14.

O. A. Westad (2005) points to an important contradiction which is easily resolvable via this paper's LOB GeoPolitical explanation.

In the midst of his strong, historical thesis that "the most important aspects of the Cold War were neither military nor strategic, nor Europe-centred, but connected to political and social development in the Third World" Westad explains how:

"The tragedy of Cold War history, both as far as the Third World and the superpowers themselves were concerned, was that two historical projects that were genuinely anticolonial in their origins [the United States and the Soviet Union] became part of a much older pattern of domination."

". . . Even though both Washington and Moscow remained opposed to formal colonialism throughout the Cold War, the methods they used in imposing their version of modernity on Third World countries were very similar to those of the European empires that had gone before them, especially their immediate predecessors, the British and French colonial projects of the late nineteenth and early twentieth centuries."

I am of course proposing that Westad's "much older pattern of domination" is an IR pattern of domination. This idea is corroborated by further, extreme Cold War contradictions, particularly its almost suicidal irrationality.

Pursuit of this idea should be a good way of testing my overall thesis, this paper's subthesis, strong definition and so on:

That the Cold War never became a Hot War was in everybody's interest. But what if the Cold War had become a Hot War . . . ?

We all know that human civilisation would have been greatly undone. There would have been no winners . . .

Further analysis of the Hot War prospect shows Westad's "much older pattern of domination" even here:

IH BIGGEST LOSER HAD THE COLD WAR GONE HOT

Had the Cold War ended as a Hot War, the IH would have been set back the most.

IR Europe had already been devastated by two world wars, and both sides had mad Counterforce strategies underlying MAD talk of deterrence . . .

Most Cold War nuclear weaponry was actually targetted at opposing nuclear weaponry, missile silos, command bunkers and so on, almost entirely within the Impact Hemisphere . . .

Counterforce bombs are generally exploded at or in the ground, for maximal destructive shock wave-effected structural damage.

Such explosions produce maximal radio-active fallout as "collateral damage", and there would have been 10's of 1,000s of such explosions . . .

IR POTENTIAL WINNER

IR former colonies were relatively well situated to avoid much of the global fallout: Oceanically beyond nearly all nuclear explosions, many of them in the always cleaner, air of the largely separate atmosphere of the Southern Hemisphere . . .

So, although IR Europe would have become the "graveyard" mentioned by Krushchev, it may well have come out of any Cold War gone Hot in a dominant position, ultimately, with its IR "much older pattern of domination" intact and so on.

STRANGE COINCIDENCE: Where and when did the Cold War start? The answer: War-ravaged Europe at the end of the WW2 continuation of WW1, largely attributable to the person of Winston Churchill . . . of Imperial notoriety . . . as at:

<http://www.fff.org/freedom/1291d.asp>

STRANGE CREDENTIALS: How strangely credentialed, the most successful contender for closest alliance with the US for the following 45 years, of the Cold War . . . !

CORROBORATIONS

Corroboratively, many US Cold War hawks were non-Isolationist European or openly pro-European . . .

IH-IH ENDING: Corroboratively, the Cold War was ended with minimal IR involvement, after a series of direct meetings between Gorbachev and Ronald Reagan . . . the most American of US presidents . . .

ONE MORE CORROBORATION: The amazing coincidence of this paper's sole, fully IH continent having attained sole super-power status in the contemporary world is another of many corroborations of my LOB-Geopolitical subthesis, and overall ebook thesis.

IR-, IH- OTHERS

IR-OTHER

IR regional agencies may thus reasonably be amongst the 1st suspected of promoting any Cold Wars or other inexplicable troubles within the Impact Hemisphere and IH-extension, between say:

Korea with itself, and/or its neighbours; Japan and its neighbours; and so on.

IH-OTHER

IH regional agencies may likewise reasonably be amongst the 1st suspected of promoting any Cold Wars or other inexplicable troubles within the Intermediate Region, say between:

Pakistan and India; the Arab nations and the EU; the EU and India and so on . . .

CORROBORATIONS

There are many. Recall LIBERTY AND JUSTICE, page 14, and One More Corroboration, above. Obviously a big multi-disciplinary field. A start:

RECOVERY

DIPLOMACIES Thesis Corroborations is rich in corroborations which point to the beginning of a recovery, return to the Figs 1 & 2 correlation, a mending of the ~500 year undoing (Hobson 2004). So too IH-IR BUFFERS'S:

"SOUTH ASIAN TEST

The 12 April 2005 news also provides a good test of the "strong" form of my theory, which predicts that such cross-boundary unions generally fail." and

"ALREADY CORROBORATIVE

That this [US-India] "nuclear deal" is already in trouble, 9 Mar 06, as at

http://www.economist.com/displayStory.cfm?story_id=5603449

strongly, widely opposed by 13 Mar 06, as at

http://www.economist.com/background/displayBackground.cfm?story_id=5603449 ,

as just predicted by the "strong" form of my theory, is thus already corroborative." and

'MEAT IN A SANDWICH'

The putative Central Asian oil war marchland happens to be that part of that IH-IR Buffer sandwiched between China and Russia . . . " and RUSSIA, A KEY TEST'S:

". . . Russia and the "Nation of Islam" have been the last big victim of Old Europe, after having been amongst the first, after Africa . . .

Russia has generally been considered European, not least by its own people, an obvious place for European expansion . . . Yet all such visions have paradoxically failed . . ."

Oil-poor IH is the biggest consumer of oil. Is the oil-rich “meat” in my IH-extensional “sandwich” really set to become a marchland?

Was the Iraq war the start of a such a push? If that “sandwich” becomes IH-extensional via “The War Against Terrorism”, much oil becomes IH, Earth’s biggest oil reserve IH-adjacent . . .

AFRICA

The fate of Africa is corroborative of Recovery, GEOPOLITICAL OTHER and other subtheses, even this ebook’s overall thesis, via those subtheses.

IR-emanant imperialisms undid African civilisation, both historically and pre-historically, obviously because they saw Africa very much as fair game, consistent with super huge impact-ed Geopolitical Other . . .

AUSTRALIA, SOUTH AMERICA . . .

. . . Ironically, tellingly, the smaller, remoter, newly re-developing (“Developing”) oceanic continents are corroboratively IHBO-regional:

Australia and South America are unusually challenged by the way they remotely span IHBO, IHBO-related boundaries, encompassing IR-IH-AA, IR-IH regions . . .

Similarly “newly re-developing” IHBO-regional IH-IR BUFFER: “. . . regions/countries which happen to be politically sensitive at the present time . . .” are corroborative.

Such coherent IHBO-regional extreme sensitivity is unlikely to be a random coincidence, is thus corroborative of my overall thesis via this paper’s subtheses.

KOREA

Partition of Korea along a line much too close to Seoul, a perpetual flashpoint in the middle of NE Asia, is largely IR work, via IR-emanant USA, the Cold War and so on . . .

JAPAN

Japan is the only IH-power to have remained more or less intact in the face of my “~500 year period of [destructive IR-emanant] world colonisation”.

During the Russo-Japanese war, the Russian European fleet ships sailed into the most obvious place for an ambush with yellow-painted funnels . . . an easy IH victory just where IR forces crossed into IH . . .

Important and vulnerable, hence an ideal enemy, Japan thus became also an easily justifiable enemy to IR powers . . .

Japan was extremely vulnerable to imperial forces, firstly to guns, later to blockade and fire bombing, ultimately leading to Japan’s downfall during WW2, consistent with this paper’s thesis:

http://www.rationalrevolution.net/war/fdr_provoked_the_japanese_attack.htm

:

“On November 26, 1941 Secretary of State Hull presented “peace terms” to the Japanese. The terms presented by Hull were such that in order for Japan to agree to them they would have had to withdraw from China, and essentially end all hostilities, something that the administration knew was not going to happen.”

“ . . . Of Hull's presentation to Japan, the American Ambassador to Japan stated that it was: *'The document that touched the button that started the war.'* ”

“After the Hull presentation to the Japanese, [a] warning was issued on November 27, 1941, 10 days prior to the Pearl Harbor attack . . . clearly show[ing] that an attack was suspected . . .”

“ . . . In 1944 British Cabinet Minister Sir Oliver Lyttelton noted that: *'Japan was provoked into attacking the Americans at Pearl Harbor. It is a travesty on history ever to say that America was forced into the war. Everyone knows where American sympathies were. It is incorrect to say that America was ever truly neutral even before America came into the war on a fighting basis.'* ”

“ . . . The Japanese were being provoked and baited by the FDR administration because even though FDR knew it was essential to enter the war against the fascists, the political opposition was too strong . . .”

“ . . . in order to really understand [US] history, right or wrong, we have to accept that Japan was provoked into attacking America . . .”

Consistently: <http://www.fff.org/freedom/1291d.asp>

SUPER HUGE IMPACT ULTIMATE GENESIS

Contemporary diplomacies, outcomes of earlier diplomacies, wars, troubles, thus corroborate my overall thesis via this paper's LOB Geopolitical “strong” and other subtheses.

AFRICA-NORTH AMERICA

Africa and North America are at extreme, polar ends of this paper's global LOB-Geopolitical spectrum.

CONTRAST AND PARADOX

North America is Earth's only entirely Impact Hemispheric continent, one of the last continents settled, the contemporary superpower corresponding to LOB-wanderers, in stark contrast to:

Africa, Earth's originally settled, only entirely antipodal, oceanic continent corresponding to LOB-conventionists closest to car parks, consistent with Africa's maximal destruction by IR invaders, enslavers, colonisers, traders and so on, Africa's being least successfully “settled”, least “developed”.

This extreme contrast is capped by a telling paradox: While the Impact Hemisphere was generally most resistant to IR Europeans, IH North America became the most successful IR European settlement!?!

GEOPOLITICAL POLARITY

The simplest explanation of this paradox, consistent with contrasting LOB-geopolitical polarities is that:

1. The extreme challenge of Africa's many waterfalls and extreme vulnerability of equator-straddling, huge Africa to drought and tropical diseases (ultimately due to Africa's extreme antipodality to the super huge Impact Hemisphere at the other end of the supercontinent), enriched self-consciousness in its primates, causing African origin of humankind, ultimately humankind's most highly developed artistic, musical conventions, as explained in DIFFUSIVE ENRICHMENTS above, manifest as Africa and the Americas (where Africans went) becoming endemic centres of globalised art, music.
2. North America is IH extremely rugged, and its unique, totally IH super-oceanic continentality was one of the furthest to get to originally from Africa, closest to get to ~300 years ago (with African slaves) from the super-continent. This spectrally opposite set of challenges was similarly enriching, but in an anti-conventionist, adventurist way. The consciousness of this region was thus enriched in egalitarian, mercantile, and art, rhythm and blues adventurisms, ultimately capitalism and contemporary rather than traditional art, music, as explained in DIFFUSIVE ENRICHMENTS above, manifest as North America's becoming the 1st endemic centre of capitalistic globalisation.

ROCKY OCEANIC PLANETS

A universal mechanism, is indicated: Sets of associated structures determining meme-gene (Blackmore 1999) co-evolution, promoting cultural globalisation and so on upon rocky oceanic planets generally.

A MOST LIKELY EVENT

A dispersed, planet-spanning, super huge cometary impact, as evidently happened to the Earth, 3.1-8, would be a most likely extreme event in the lifetime of any rocky oceanic planet in any star system.

"THESHI" CLASS OF IMPACTS

We can regard Earth's ocean-continent configuration as typical of a "THESHI" class of super huge planetary impacts; Hemispherically impacted, rocky planets with oceans ~10 kilometres deep:

Such super huge impacts generally produce an Impact Hemispheric super-ocean including one or two continents. Peripheral continents overlap an Impact Hemispheric Boundary (IHBO).

These include a super-continent antipodal to multiple impacts, divided in IHBO and Intermediate Regions by most emphatic global bisectonal faultline energisation manifestations, w.2:

"Serm macro" inscribed, Vols y, 0-4, central mountain ranges, inland seas, lakes, peripheral sea channels, coastlines, continental shelf edges.

The planet's oceans are similarly characterised by "macro"-ed inscription manifestations energised by global bisectonal faultlines.

US EXCEPTIONALISM

"American exceptionalism is important because U.S. power and influence are exceptional in this unipolar world" (Kohut , 2006e).

"Exceptionalism . . . is . . . widely used in the ongoing public debate about American hegemony in the twenty-first century" (Kohut , 2006f).

"American exceptionalism, all that it is and all that it isn't, is what shapes attitudes toward the United States around the world" (Kohut , 2006g).

"So it is both what Americans are and what they are not that make them truly exceptional" (Kohut , 2006h).

" 'America is not exceptional because it is powerful; America is powerful because it is exceptional.' What makes America different keeps it rich and powerful Bush policies . . . 'embody American exceptionalism' " (Kohut , 2006i).

"Many of the qualities that Americans have exhibited in the war on terrorism so far reflect Walter Russell Mead's "Jacksonian" approach to the world" (Kohut , 2006j).

"Wilsonians urged promoting American values with missionary zeal Jacksonians took a prickly, populist "don't tread on me" attitude toward the world" (Kohut , 2006k).

". . . The public mostly voted for Bush's tough Jacksonian approach, not his Wilsonian idealism. Should the current administration or a future one overplay idealism or imperialism, public support probably will not be there" (Kohut , 2006l).

"The intervention in Iraq became an unpopular war . . . because it did not work out well" (Kohut , 2006m).

"Certain basic American values do not dispose Americans to be exemplary global citizens" (Kohut , 2006n).

"Individualism, self-reliance, and unflagging optimism are great American strengths, but they do not encourage internationalism" (Kohut , 2006o).

"America's oldest friends fault it for [a] Lone Ranger tendency in approaching global problems" (Kohut , 2006p).

"The U.S. brand of nationalism is a good deal more benign than . . . other forms in which nationalism has manifested itself over the course of history. In short, Americans do not want to rule the world" (Kohut , 2006q).

INTENSE ATTACHMENT

The American writer Henry Miller's comment that "Germans make the best Americans, the worst Germans" is one of innumerable allusions to a peculiar intensity of White attachment to this Yellow land

Note the consistency of Miller's "worst Germans" with DIPLOMACIES: "Containment of the EU at the Ukraine this IR-IH proto-struggle."

LOB GEOPOLITICS

My LOB GEOPOLITICS Point 8 idea "~500-year-old Yellow IH culture corresponds to LOB wanderers remotest from car parks" is corroborated by US research into the US backwoods frontier.

US BACKWOODS FRONTIER

North American log cabin relics indicate that the US backwoods frontier was largely created by 2,000 Finnish immigrants, starting from New Sweden in 1638 (Jordan & Kaups 1989).

When the Dutch took control of New Sweden, they commented on how Finnish settlers mixed, traded freely with Indians, described them as “already half-Indian”, good hunters and so on.

IH-IH BUFFER?

Relations between Indians and White settlers were thus buffer-/flux-/catalys-ed by already buck-skinned slash-and-burn forest colonisers from Finland.

There were unusually many Yellow (IH-loving) meme-genes in the White invasion force, and these were resonant with native American IH meme-genes

Emigrants from Scandinavia and Eastern Europe generally migrated to the US rather than to South Africa, Australia or South America.

The meme-gene pool of Scandinavia and Eastern Europe had long been incorporating “Pulse of Asia” and other IH meme-genes

EXCEPTIONAL LOVE

Such buffering was globally unusual at IR, IH, AA frontiers. The US frontier was thus unusually lucky in having been softened by a “homecoming”:

Finnish and other IH meme-genes returning to a super huge impact Hemisphere they had been “out of touch” with since leaving a Lake Baikal-centred culture.

These Finnish meme-genes would since have become widely dispersed throughout US White, US Indian meme-gene pools.

The Eastern parts of North America first colonised by Europeans are peripherally IH, serm morphologically (4.5-11) similar to peripherally IR Europe where most early US immigrants came from.

Climate, flora and fauna are similar also

This, together with IH-Buffered IR-IH mixing explains US Americans’ exceptional love of the USA. See IMPACT HEMISPHERIC CULTURE, SERM LOVE below.

US CAPITALISM

Proto-Capitalist values would have already been extremely enriched in the Americas by IH, IR ruggedness and distances covered in its immigrations, as explained above.

North American enrichment would have been further promoted by the “most extreme challenge” of being the oceanic continent which was “closest to get to from the super-continent by boat”.

US EXCEPTIONALISM, DIPLOMACIES, LOB GEOPOLITICS, and DIFFUSIVE ENRICHMENTS ideas are thus mutually corroborative, re contemporary, globalising Capitalism for example.

OTHER CORROBORATIONS

FINNISH CAPITALISM

Finnish adventurist business sense, modernism, futurism could be added to that mutuality.

My observation of Finns in the 1960s was that they were surprisingly market savvy: Exporting superb log cabins, world-class glassware from bush factories and so on.

This seemed paradoxical to me, considering that Finland had been poor under 100s of years of Swedish colonisation, Russian occupation. Its short independence had been marred by three wars.

Historians would generally attribute Finland's extreme business sense to the spur of Finland's huge war reparations debt to the USSR, Luther, films, TV and so on

Finland's 10,000s of navigable lakes are consistent with a prehistoric trade based on a most economic fur, dried meat and fish resource at the N edge of Europe

Reindeer meat Freeze-dried in Lapland's winter forests is nutritious and tastes good. It must surely have been traded with furs, long ago via Finland's lakes, along great Russian, European rivers

Novgorod, opposite the Vyborg gateway to the Finnish lakes, was a fur trading centre founded, like most of Russia, by Scandinavian Vikings (Jordan and Kaups, 1989).

Dried Norwegian cod would have been similarly traded, consistent with later Viking's excellent ship designs, these having most likely evolved over a long period of trade of some kind

Superb Baltic cuisine, Viking warrior culture are similarly consistent with an ancient trading culture. So too the fact that the world's last tall sailing ships were operated from Finland, until WW2.

Finland's business success includes excellent ship, architectural, art, craft design traditions, a remarkable diversity of cutting edge skills, as at Nokia.

AUSTRALIAN BACKWOODS FRONTIER

Similar backwoods frontier research and oral history in Australia is consistent with a less fruitful, but otherwise similar history of pathfinding by pioneer settlers.

Some "went bush", reduced social connections to trade, via bush intermediaries, for the sake of freedom, independence and so on. Very few got on well with aborigines.

My grandfather as a young man in the late 19th Century, saw how such "early birds" had taken the "easy pickings" of valuable Huon Pine from the banks of the remote coastal rivers of Western Tasmania.

My father found clearings behind coastal Bauera which had obviously been aboriginal camp sites prior to "transportation".

FURTHER CORROBORATIONS

There are many trans-disciplinary corroborations of this paper's subthesis of my overall thesis.

Trans-IHBO conquests, European conquests in Asia and the Americas, Asian conquests in Europe, have been extremely problematic, tellingly least so in the USA . . .

While North America is entirely Impact Hemispheric, South America and Australia are half IHBO Limb Regional, half Impact Hemispheric

Early loss of Spanish control of its colonies, and failure of Australia's White Australia policy, increasing Asian immigration into Australia and so on, are corroborative.

Concentration of Asian genes in IHBO limb-regional Scandinavia, and general failure of White settlement of the East Asian centre of Yellow endemism and Black Antipodal Africa, are corroborative.

The Intermediate Region has long been the centre of endemism of White people: Europe, W, SW and South Asia, details below.

Most successful White settlement of North America, the only wholly Impact Hemispheric continent, thus seems paradoxical.

Until one considers the above-described, LOB GeoPolitical IH-IH Buffer uniqueness of US settlement, and:

Native Americans' extreme vulnerability to Afro-EurAsian disease, due to the N-S orientation of the Americas (Jared Diamond and others).

UNIVERSAL PROGRESS

Those impact-effected differentials would be planetary, indeed universal. I refer to ROCKY OCEANIC PLANETS . . . "Theshi" Class of Super Huge Impacts.

Super huge impact may be the ultimate determinant of how civilisations evolve on rocky planets with ocean-continent surfaces, how they globalise and so on, at least for starters, the contemporary situation on Earth, apparently . . .

UNIVERSAL GEOPOLITICS

A "THESHI" class of super huge impacts would tend to produce an IHBO-straddling super-continent antipodal to an Impact Hemispheric super-ocean, and minor oceans, oceanic continents, as on Earth.

Planetary super-continent opposing super-oceans would generate strong climate oscillations, Ice Ages, Southern Oscillations and so on, with drought cycles most strongly affecting super-continent IHBO Limb-Regional centres, as IPCC studies show for Earth.

The super-continent's Intermediate Regions, halfway between drought-prone ends, would be most emphatically crossed by supercontinent-central ("Mediterranean"), global bisecting faultline manifestations, as on Earth. See w.2 Slide Show in Appendices.

0. Super-continental Intermediate Regional, extreme global bisecting faultline manifestations halfway between supercontinents' drought-prone ends, broad latitude spread, oil, salt mineralogies, would be most promotional of original globalisation phases of cultural evolutions.

GLOBALISATION'S ORIGINS

In the case of the Earth, the Intermediate Region was home to Celtic and Roman slave empires, the IHBO Limb Region the "Pulse of Asia", Africa a similar refugee pulse.

There is a history of similar correlations up to the contemporary situation touched on in IH-IR BUFFER and RUSSIA: A KEY TEST above.

It is extremely unlikely that these geopolitical correlations are random, and it is easy to see how they could be causally related, again with the arrow obviously pointing from geology to culture:

A Southern Oscillation drought cycle has produced starvation, migration, conflict, slavery, IR slave empires, consequent cultural evolutions, ultimately today's mercantile globalisation.

There seems to be no reason why such a global mechanism would not be universal, drive rocky oceanic planetary cultural evolutions towards globalisations more or less universally.

1. Globalisation phases of civilisation evolutions may generally emanate from planetary Intermediate Regions as Empires, spurred by Impact Hemispheric egalitarian mercantilism, Original World conventionism:
2. Earth's 1st, mercantile globalisation AD 500-1800 (Hobson 2004) emanated from the IHBO limb regional super-continental, quasi-IH extension of the Impact Hemisphere.
3. WW2 returned Earth globalisation from an imperial phase to a mercantile phase emanating from the Impact Hemisphere again, this time its super-ocean's only entirely IH continent.
4. This half cycle has looked like becoming a full cycle since the turn of the millenium, with China shaping up as the next superpower, a first oscillation?

LOB GEOPOLITICS

Note the consistency with this paper's LOB GEOPOLITICS, DIPLOMACIES subtheses, above.

LOB Geopolitics seems to hold for Earth at least, where it has evidently not been supplanted by Humanistic Disciplines and so on.

IMPACT HEMISPHERIC MERCANTILE RENEWALS?

Point 3 Globalisation renewals emanant from Impact Hemispheric super-ocean continents initially, may also be universal, consistent with US EXCEPTIONALISM and preceding sections above.

On Earth, this continent is North America, the Earth's only fully IH continent, and the fully oceanic continent nearest the super-continent, the obvious destination of mass migrations with least discrimination. This tendency too may be universal.

So too renewals, initially at least, by Point 4 mercantile, Impact Hemispheric oscillations, consistent with IMPACT HEMISPHERIC CULTURE, below.

Application of Occam's Razor to our "first oscillation" thus suggests that:

5. Imperial phases of globalisation may be universally succeeded by mercantile renewals, with the endemic centres oscillating between Impact Hemispheric super-oceanic IH continents, super-continent IHBO-limb regions.
6. The major drivers of such oscillations may be buffers/moderators/mediators emanant from Impact Hemispheres, manifest as (in a word): humanisms.

GLOBAL RENEWALS?

Ocean continents beyond these original centres, many of them ½ IH would, as settler colonies of Old World imperial centres, generally also become mercantile, but only in a ½ IH- ½ IR sense, as on Earth.

An alternative explanation is indicated under IH-IR BUFFER Definition above:

“IR EXTENSION?: . . . countervailing possibilities:

China and SE Asia remaining with India in the IR beyond the IH-extension, where my IHBO strictly places them. Australia may ultimately tip the same way . . .”

7. Oscillations may thus on the other hand, continue between Impact Hemispheric renewals and Intermediate Regional renewals . . .
8. Would such Intermediate Regional renewals necessarily continue to be neo-Imperialistic? How might LOB Geopolitics evolve? Will it ever be transcended?
9. Is LOB Geopolitics generally ultimately succeeded by Cyborg design globalisations, trans-planetary federations and so on, hopefully humanistic?
10. Or are all Cyborg design evolutions more or less terminated by LOB Geopolitical Davids, not necessarily humanistic Davids?

This idea is further explored under GOLIATH SYNDROME in paper 5.3.

As explained under LOB DISPERSION, page 8:

“CIVILISATION NOISE

LOB GeoPolitical spectra may require either LOB wildness or near global scale to become obvious, consistent with my “~500 years”, Figs 1, 2 observations.

LOB GeoPolitical spectra may be degraded by civilisation emanations, just as canaries in mines are sensitive to gas . . .

My references to “Cyborg design globalisations/evolutions” in Points 9, 10 of UNIVERSAL PROGRESS, page 38 are allusions to this idea.”

GEOPOLITICAL PROGRESS

Cultural progress on rocky oceanic planets is thus evidently generally geopolitically effect-ed, at least while globalisations are primitive

This is my answer to the question raised earlier in GEOPOLITICAL OTHER Globalisations:

“Will this European influence yield a Law & Order union globalisation, a sort of super-EU, or simply IR-moderation of an IH-dominated globalisation?”

MELTING POTS

The ultimate cause of human cultural globalisation has thus evidently been cometary super huge impact.

1ST MELTING POT

In the above explanation, Earth's Asia-centred mercantile globalisation of 500-1800 (Hobson 2004) would have been the original White-Black-Yellow "melting pot".

1st "melting pot" centres shared the Mediterranean Sea, many marchlands with Europe. 2nd, 3rd, 4th melting pots become more imperial:

2ND MELTING POT

IHBO Limb Regional NW EurAsian steppes extended into Western Europe.

Huge deserts and mountain ranges separated these West Asian, N African coastal marchlands from other, non-European civilisation centres. Hence European 2ND "melting pot" candidacy.

Europe was highly defensible, Scandinavia extremely so. Europe was big and far enough away to remain a White centre of endemism receiving Yellow, Black memes.

Europe thus became Earth's 2ND "melting pot". Hence European dominance since the Renaissance, 5.4 EARLY GLOBALISATION. Consistent with such super huge impact-ed geopolitics:

Successful European world colonisation of Australia and the Americas was tellingly, like Europe itself, largely IHBO Limb Regional.

3RD MELTING POT

The US presumably became dominant recently for much the same general reason, its having become history's 3RD melting pot as explained above, again consistently super huge impact geopolitical.

4TH MELTING POT

Contemporary mercantile globalisation, history's 4TH melting pot is ultimately also super huge impact geopolitical in so far as it derives from 1st, 2ND and 3RD melting pot relics.

IR GLOBALISATION

Consistently: The 2ND melting pot, evidently started in (IR-IH)-(IR-AA-IH) dissonance with the 1st melting pot, 5.4 NEW WORLD ORDER, Euro-9/11?.

2ND, 3RD and 4TH melting pot imperial globalisations continued 2ND melting pot (IR-IH)-(IR-AA-IH) dissonance with the 1st melting pot to the present day (Hobson 2004).

IR-, IH-, AA- REGIONAL CHARACTERISTICS

I characterise my Yellow-, Black-, White- correlated IR, IH, AA regions:

1. Impact Hemispheric-IHBO regional (IH) land is mostly extremely rugged, faultlined, volcanic, often cold. Its tropical regions are generally extremely fertile, wet, riverine, coastal.
2. Antipodal to the most heavily impacted Central Pacific, Africa (AA) is similarly grand, but oppositely, mostly dry, 3.1-8.
Africa's plains are often non-coastal, dry, its great rivers often waterfall-ed least, tellingly, where Africa became most civilised: in Egypt and Nigeria.
3. Intermediate Regional (IR) lands, Europe, W, SW, Southern Asia, India, have many salt mines, extensive riverine plains, facilitative of slave civilisations.

4. Egypt and Nigeria are strictly AA, but also quasi-IR.
5. Strictly IR, Scandinavia is quasi-IH.
6. Australia is strictly IR-IH, but also quasi-AA being, like Africa, genetically sub-equatorially antipodal to a huge oceanic impactor.

CAUSAL ASSOCIATIONS?

Putative causal associations between these thus characterised regions and White, Yellow, Black cultures:

7. IR, quasi-IR lands became cradles of city-centred slave civilisations because their extensive riverine plains facilitated road, canal communications, lent themselves to slave-operated farms, salt mines.
8. Warrior Yellow, White associations with IH, quasi-IH regions is largely due to the fact that:
 - Extreme impact energisations have produced most rugged, most easily defended terrain (natural mazes, natural fortifications), mineralisations adjacent to bisecting river transportation.
9. The SE Asian quasi-IH region supported important early civilisations because of:
 - Intensive rice cultivation in rich volcanic soil; adjacency to tropical/subtropical, sheltered coastal seas; simple housing; largescale fishing/whaling; coastal communications; and so on.
10. With the telling exceptions of riverine quasi-IR Egypt and Nigeria, AA lands were uniquely suited to Paleolithic culture.
11. Australia's Black endemism is consistent with Australia's being "similarly grand, but oppositely dry" to Africa.

IMPACT HEMISPHERIC CULTURE

Refer to HUMANISMS, page 19 above. Point 6 in UNIVERSAL PROGRESS, page 38 above:

"The major drivers of such oscillations may be buffers/moderators/mediators emanant from Impact Hemispheres, manifest as (in a word): humanisms."

For the case of the Earth, in DIFFUSIVE ENRICHMENTS Multiscale LOB Geopolitics above: "LOBs are thus seen as micro-worlds, LOB-geopolitics as globally ubiquitously multiscale, from beach scale to planetary scale . . ."

"Egalitarian, mercantile, adventurisms" are seen as a subset of "humanisms", the un-conventionalisms of LOB far end wanderers extreme subsets of egalitarian, mercantile, adventurisms."

The connotation of this single word "humanisms" describing "world race, religion, culture humanisms [for which the Impact Hemisphere is, with Africa, one of two] key centres of endemism" must obviously include all vital qualities necessary and sufficient to explain the CORRELATIONS.

One may need to study all ancient institutional structures of the Impact Hemisphere which are uniquely successful, in ways which might have derived from IH-mercantile or other precursors similar to those that surrounded, supported the greatest

producers of “greatest achievements in the humanistic disciplines” of CORRELATIONS Humanistic Decline above, and work out a family tree, showing derivations.

Candidate “ancient institutional structures” which come to mind: Zen Buddhism, underlying Kung Fu, Daoism, Shinto and so on, Confucianism, Mandarin, Samurai relic systems and so on.

Candidate “necessary and sufficient” “vital qualities” which come to mind, obviously a field with much potential for Humanistic Disciplinary research:

CHI

Chinese word for vital energy, life force.

IMPACT HEMISPHERIC RESISTANCE

There are many indications that Impact Hemispheric indigines resisted European world colonisation most effectively, as in:

New Guinea, Bourgainville, and New Zealand, not just Koreans, Japanese, and North Americans, both Indians and frontiersmen.

I alluded to this notion, indeed explained it LOB Geopolitically in my original discussion, under LOB GEOPOLITICS: “. . . . it was hardly surprising that Britain lost control of North America first.”

Note the consistency of Britain’s most famous mutiny having happened in the middle of the Impact Hemisphere (IH), Britain’s continuing difficulties with IH descendants of the Bounty’s mutineers.

IMPACT HEMISPHERIC LOVE

Impact Hemispheric indigines have, tellingly, generally stayed within, or close to the Impact Hemisphere as they migrated into North America, across the Pacific Ocean and so on.

There are important migrations more or less along IHBO:

- IHBO Limb Regional Vikings stayed close to IHBO, crossed IHBO at Iceland.
- Proto-Finnish-Korean-Japanese language bearers followed IHBO’s onsen (hot spring)-rich East Asian end, from a putative common Lake Baikal origin into Korea, Japan.

These migrations are consistent with serm morphologies having been loved, followed.

Peoples have thus evidently been profoundly attached to home serm morphologies, along IHBO parallels/ contours, within IHBO Limb Regional lands and so on, see SERM LOVE below.

Scandinavians, Inuit and other Arctic peoples may have been more attached to IHBO limb-regional serm morphologies than to snow and ice forms. There are indications of “plays” upon such attachments:

Finnish orthogonal migration with respect to IHBO for example, the kind of exception that proves the rule, is consistent with wood-heated sauna evolution as onsen replacements.

EGALITARIANISM

Attachments to IH morphologies must have been intense, because they were costly: Cold, earthquakes, tidal waves, volcanoes, communications difficulties, and so on.

A key, possibly major cause of IH love was how IH and quasi-IH regions were often both cold and extremely rugged, most suitable for egalitarian industries from hunting to fur trading, and defense against Slave Civilisations of the Intermediate Region (IR), NATURAL FORTIFICATIONS below.

IH and quasi-IH regions were deficient in key features making the Intermediate Region (IR) the centre of Slave Civilisations: extensive warm or temperate, riverine and other fertile plains; super-continent bisectonal (w.2) major shipping channels (Mediterranean, Red and Arabian Seas, Persian Gulf and so on).

PROTO-CAPITALISM

Impact Hemispheric ruggedness may thus have ensured that the Pacific Ocean, East & SE Asia, Arctica, the Americas became the centre of endemism of warrior cultures, Kung Fu, Zen and so on.

Impact Hemispheric ruggedness would have similarly stimulated imperial societies at: the US Western frontier, Russian Eastern frontier, Chinese, Korean and Japanese N frontiers and so on.

Frequent coincidences of mineralisation with Impact Hemispheric serm bisectonal fault lines (serbils), often navigable waterways, may have promoted earliest, egalitarian industry and trade, proto-Capitalism.

PROTO-MODERNISM, -FUTURISM?

Serbil mines, bisectonal waterways, fertile soils and so on may have put the Impact Hemisphere ahead of the other in the evolution of market, capitalist social values, as proposed for quasi-IH Finland above.

IH Regional contemporary fastest, capitalistic growth may thus be ultimately super huge impact geopolitical.

IR/QUASI-IH DIVIDE

Extreme sub-horizontal, antipodal, and global bisectonal faultline energisations, w.1-2, explain the ruggedness of Russia, China, Tibet, SE Asia, Scandinavia, Switzerland.

It may also be the ultimate origin of the long-argued-about profound cultural polarities between Northern, Central and Southern Europe:

Scandinavian cold and ruggedness must have facilitated defense against Celtic enslavement. Southern European ruggedness must have facilitated defense against IR Celtic and Roman enslavement.

Warrior traditions may thus generally have originated at quasi-IH IHBO-limb-regional edges of slave societies throughout human history, in:

Peripheral N Europe, W & Central Asia, SE Asia, NE Asia, Kashmir, Afghanistan, Pakistan, Kurdistan, the Americas and so on, consistent with IHBO-Limb-Regional serm love.

The generally troublesome histories of mountain/desert peoples, Macedonian, Kurdish, Persian, Mongolian, Japanese, Korean, Viking cultures, Scandinavian egalitarianism and so on, are thus evidently, ultimately IR/quasi-IH super huge impact geopolitical.

SERM LOVE

I generalise from Impact Hemispheric Love, above: Attachments of peoples to homelands may generally be Home serm morphological. As explained earlier:

Relatively successful European occupation of Australia IR-(IH-AA) and the Americas (IR-IH)-IH, for example, may have much to do with sufficient IHBO Limb Regional similarities with Europe (IR-IH).

Relatively unsuccessful European occupation of Africa may, on the other hand, ultimately have been due to stress pathologies associated with (IR-IH)/IR-AA dissonance (Hobson 2004).

PLACES FOR VILLAGES

Serm Love ideas are consistent with earlier, smaller-scale resonances noted in my review-version thesis:

Serm bisectional centres often combine rugged morphologies with useful sand, gravel, and other mineralisation, 4.16, navigable water, and otherwise endowed places for villages, as in Scandinavia:

NATURAL FORTIFICATIONS

The most important Viking settlements, at Roskilde in Denmark, and on Bjoerkoe, an island in Lake Malaren, and settlements at Sigtuna and Uppsala, Sweden, are all naturally hidden within most rugged central regions of large, rugged serms.

The Savo-Karelian serm in Finland is one of the world's most complex mazes, a natural defensive barrier. Russian colonisation of Finno-Ungrian peoples has generally stopped within this rugged serm.

Much the same can be said of the Swedish Barrier and Home serms, and the Danish Roskilde serm, and the serm chain along the Norwegian coast. Scandinavians have been protected by serm mazes.

That the Salt Lake City centre of the polygamous Mormon religion is at the centre of the emphatic Utah serm suggests that its location has been well chosen also.

In contemporary Scandinavia, most people continue to live amongst most emphatically macroed subserms:

Along the Atlantic and Baltic coasts, along the E-W line from Gothenburg, through Stockholm, Aland, Turku, and the lake country of Southern Finland.

REGULAR FORMS

Serm circular, bisectional, and hexagonal regularities may have grown on humans settled within emphatic serms. Evidence:

The yin-yang principle is often drawn as a bisected circle, as on the Korean flag, and yin-yang bipolarity is fundamental to Chinese philosophy. Terrestrial serms are similarly bisectional and differential.

The Yellow Sea serm, bisected by the SW shoreline, is one such example. Eastern philosophy's favoured rectangle is (not the Greek golden ratio rectangle, but) the square, the most circular rectangle.

Ancient British Stonehenge culture idealised circular landscape forms bisected by rivers. The mapped landscape in Tolkein's Lord of the Rings Trilogy is circular, with a bisectional river.

China, Korea, Britain, Salt Lake City are strongly sermed. Is all this chance coincidence?

NATIONAL ORIGINS

Others of the world's ethnic-/national-ities have similarly defensive and inspiring home serms, serm segments, or sectors. A few:

Scots, Irish, Spaniards, Czechs, Hungarians, Slovaks, Kosovars, Greeks, Turks, Armenians, Kurds, Mongols, Japanese, Koreans, Chinese, Philipinos, Bourgainvilleans.

Even the largest, 4,000 kd serms, show strong ethnic correlations: Europeans, Indians, for example. Any causal arrow could only be pointing from serm to culture, not the other way round.

IMPACT HEMISPHERIC FUTURISM

E coastal Asians, North Americans, Finns may have been stimulated by similar Impact Hemispheric geomorphologies to become similarly most futuristic. See IMPACT HEMISPHERIC CULTURE, US EXCEPTIONALISM, above.

As Kohut (2006r) quotes Madeleine Albright, Der Spiegel's Claus Malzahn as having said: "[the US sees] further than other countries in the future"; "Americans strive for the world of tomorrow".

There are 8,000-year-old rock carvings of 12-man whaling ships attached by harpoons to great whales, in Ulchu, SE Korea.

There are also submerged pyramids off Japan's W-most islands, similarly consistent with an ancient NE coastal Chinese/Korean/Japanese whale-based civilisation.

OCEANIC DIFFUSION

Ocean storm diffusion of human populations, ideas has long been under-rated as too catastrophic, 5.3.

POPULATIONS: We now know that the Pacific Ocean was populated via SE Asia via Indonesia.

Polynesians sailing throughout the Pacific Ocean upon large catamarans, many of which might easily have been blown to the Americas. Ships of earlier Polynesians also!?!?

IDEAS: We know that fishermen are often adventurous and prevailing winds are generally from the West.

Many fishermen and their ideas, must have been blown to the Americas from Polynesia, to Africa from South America.

PYRAMIDS: If American and Egyptian pyramids have a common source, the idea would thus have most likely come from the West:

From South America to Africa; From coastal East Asia to South America, possibly via Polynesia. West Africa, Ascension and other islands could be targeted in a search for pyramidal cultures.

CONCLUSION

Paleo-archeological evidence that homo sapiens originated in Africa has been strongly corroborated via analyses of Human mitochondrial DNA (mtDNA) and Y-chromosome variation (<http://news.bbc.co.uk/1/hi/sci/tech/4543767.stm>, Macauley 2005 . . .).

The thus confirmed "Out of Africa" hypothesis corroborates this ebook's Meta-Geology via strong correlations and, more importantly, the corroboration is mutual.

The correlations of Figs 1 & 2 lead to explanations of the "Out of Africa" thesis, how and why African descendants of homo erectus were more successful than Asian, Australian descendants and so on.

Earth's Impact Hemisphere (IH), antipodal Africa, & Intermediate Region correlate with the New World/Oceania, Original World, & Old World, respectively, and the distribution of Yellow, Black, & White coarse race categories respectively, before an ~500 year period of world colonisation (Hobson 2004) which has been undoing these probably causal associations.

The simplest explanation of the strong correlations is that Black peoples became White, Yellow as they migrated from Africa into Europe-West Asia, East Asia and beyond, due to diffusive enrichment of White, Yellow characteristics in IR, IH regions, respectively; Old World, New World qualities, values in IR, IH regions, respectively.

The simplest meta-explanation of the IH-, AA-, IR-correlated race, religion, culture differences is that they are ultimately caused by super huge impact physics differentials, probably geo-chemical enrichment differentials, and climate differentials produced by spin readjustment.

While technological progress and natural selection-driven genetic evolution may have been generally maximized by IR, IH migratory environmental challenges, which would have been greatest in Asia, complementary refinement of humanistic conventions would have had an opposite dependence on sexual selection, maximal in cul-de-sacs, in "mini-world" cities in "out of the way" parts of AA Africa and in "mini-Africas" globally: China, Japan, Australia, New Guinea, Lake Baikal surrounds, Persia, Greece, Scandinavia, Peru, Chile, Cambodia . . .

Homo sapiens thus came "Out of Africa", instead of Asia where homo erectus may have originated, because homo sapiens is conventionalist, and Africa had highest sexual/natural selection ratios.

SEXUAL SELECTION THUS MOST IMPORTANT FOR HOMO SAPIENS

Homo sapien's coming "Out of [AA] Africa" has implications. Three corollaries:

Sexual selection has thus evidently been more important than natural selection in evolution of homo sapiens, in contrast to evolution of homo erectus (he), where natural selection may have been most important.

Homo sapiens (hs) would have evolved a dualistic mind from a bifurcated he mind (an hs-he dualism in a bifurcated he forebrain function), bifurcation being biologically ubiquitous.

As the hs half of a new, hs-Other hs post-he forebrain dualism distinguished itself socially, the Other hs half may have migrated and distinguished itself psychologically. Hence our largely Other-hs-oriented imaginations! High pedigree duality/multiplicity of human psychologies, human institutions is corroborative. I propose that the soulful directors of our dreams manifest the original, ancient he half dualism.

The strength and coherence of “the Figs 1, 2 planetary scale LOB Geopolitical spectral dispersions” indicates that while “mixes of micro to intermediate scale, similarly geopolitical spectra” are indeed ubiquitous, such mixes are generally dominated by the planetary scale spectra.

No other geopolitical theories are so strongly corroborated by contemporary diplomacies, Russian diplomacies for example, long seen as paradoxical.

The amazing coincidence of this paper’s sole, fully IH continent having attained sole super-power status in the contemporary world is another of many corroborations of my LOB-Geopolitical subthesis and overall ebook thesis, CORROBORATIONS, page 31.

Super huge impact may be the ultimate determinant of how civilisations evolve on rocky planets with ocean-continent surfaces, how they globalise and so on, at least for starters, the contemporary situation on Earth, apparently . . .

REFERENCES

- BLACKMORE S. 1999. *The Meme Machine*. Oxford University Press.
- BLAUT J. M. 1993. *The Colonizer’s Model of the World*, p208, Guilford Press, London.
- CARROLL J. 2004. *The Wreck of Western Culture*. Scribe Press, Carlton, Victoria, Australia.
- DOUGLAS K. 2006. Evolution and Us. *New Scientist*, 11 March 2006, p30-33. This work is also reported at: <http://www.futurepundit.com/archives/001892.html>
- EVANS J., GRIMSHAW P., PHILIPS D. & SWAIN S. 2003. *Equal subjects, unequal rights*. Manchester University Press, Manchester, UK.
- HOBSON J. M. 2004. *The Eastern Origins of Western Civilisation*, p225, p8, p16, p27, p310, Cambridge University Press, Cambridge, UK.
- JORDAN T. G. & KAUPS M. E. 1989. *The American backwoods frontier: an ethnic and*

ecological interpretation. John Hopkins University Press, Baltimore, USA.

KNIGHT C. AND BUTLER A. 2004. *Civilization One*, 211-216, www.watkinspublishing.com

KOHN M. 2006. *New Scientist*. **2558**, 1 July 2006, p35, p39.

KOHUT A. 2006a, b, c, d. *America against the world: how we are different and why we are disliked*, 18, 19, 19, 18, www.henryholt.com

KOHUT A. 2006e, f, g, h, I, j, k, l, m, n, o, p, q, r. *America against the world: how we are different and why we are disliked*, 220, 9, 225, 223, 16, 221, 20, 224, 223, 222, 224, 18, 223, 17 www.henryholt.com

MACAULAY V.; HILL C.; ACHILLI A.; RENGU C.; CLARKE, D.; MEEHAN, W.; BLACKBURN, J.; SEMINO O.; SCOZZARI R.; CRUCIANI F.; TAHA, A.; SHAARI, N.K.; RAJA, J.M.; ISMAIL, P.; ZAINUDDIN, Z.; GOODWIN, W.; BULBECK, D.; BANDELT H.J.; OPPENHEIMER S.; TORRONI A.; RICH 2005. Single, rapid coastal settlement of Asia revealed by analysis of complete mitochondrial genomes *Science* 308, pp.1034 - 1036.

MINERAL COMMODITY SUMMARIES 2004. Quoted at:

<http://www.mapsofworld.com/minerals/world-selenium-producers.html>

REYNOLDS D. 2000. *Britannia Overruled*. P 319, Pearson Education Limited.

SWEGEN H. 1995. *The Global Mind: The Ultimate Information Process*. Minerva.

THRANHARDT B. 2007. Voices Within. *Cosmos*, **13**, Feb-Mar, p72-5.

WESTAD O. A. 2005. *The Global Cold War*. p396-7. Cambridge University Press.